



SUPER STAR SALE

SATURDAY | MARCH 15TH | 2 P.M.

TARGETED NUTRITION
Blueprint

Keep your cows **cool, calm**
and collected this summer
with Blueprint® and ClariFly®



Proven Results:

- +20.2 lbs/head weaning weight
- +33.6 lbs/head yearling weight

Defend Against Flies:

Stable flies, horn flies, house flies, and face flies impact cattle performance.

Stop Weight Loss. Boost Performance.
Talk to your dealer on how you can save today!



KEEP CALVES PERFORMING WITH CRYSTALYX®

Support feed intake, efficiency and average daily gain at weaning through the consistent consumption of CRYSTALYX stress products. Proper nutrition is the first step toward reducing stress induced sickness.

Buyers of the leadoff Bull and Female from each breed sale will receive a free 60# CrystalXx Brigade Stress Tub.

Pickup your gift at the Hubbard Feeds tradeshow booth after the respective sale.

Brigade®
STRESS FIGHTING Formula

Keep your calves performing through weaning by picking up CRYSTALYX at your local dealer. CRYSTALYX.com | 800-727-2502

TARGETED NUTRITION
Blueprint

Mick Schaefer
Sales Representative
815-763-0730

HUBBARD
an Altech company

Jordan Gilbert
Beef Specialist
937-670-4231

ClariFly
LARVICIDE

CrystalXx
BRAND SUPPLEMENTS

Ryan Bapst
Sales Manager
740-835-9789



On behalf of the Ohio Angus Association and our Board of Directors, it's my pleasure to welcome you to the Ohio Angus Super Star Sale. Last year's sale was deep in quality and as you evaluate this years offering, you will notice that the consignors have dug deep; consigning some of their very best genetics from the hearts of their programs.

With the proven performance consigned & profitability of the dams and sires represented, this promises to be an excellent sale that has something for everyone, from the commercial cattleman to purebred Angus breeders and junior showmen.

I encourage you to contact the breeders listed in the catalog about their consignments. If you are in need of additional assistance before the sale, please contact me at 740-648-6531 and secretary@ohioangus.org, or any member of our sale committee.

I'm excited about the lineup for this sale, and encourage you to bid with confidence as these cattle are being offered by some of the most reputable breeders in Ohio and surrounding states. They are prepared to stand behind their cattle confidently and according to the terms and conditions of the sale as recommended by the American Angus Association.

Again this year, we will be offering online bidding through CCI, so anyone unable to attend the sale can tune in safely from their home and bid with confidence online.

Sincerely,



SUPER STAR SALE

SATURDAY | MARCH 16TH | 2 P.M.

OHIO STATE FAIRGROUNDS | COLUMBUS, OH

BULLS | FEMALES | HEIFER PREGNANCY | EMBRYOS

AUCTIONEER

SALE MANAGER



Ron Kreis
740-683-3235



Jacy Bapst
740-648-6531

SALE REPS/RINGMEN

| | |
|--------------------------------------|--------------|
| Alex Tolbert American Angus Assoc. | 706-338-8733 |
| Ryan LePage Special Assignment | 740-627-0133 |
| Darby Walton Special Assignment | 567-232-2798 |
| Drew Turner Special Assignment | 330-307-0267 |

SALE DAY PHONES

| | |
|---------------------------------------|--------------|
| Jacy Bapst Sale Manager | 740-648-6531 |
| Mike Atterholt Ohio Angus President | 419-651-5293 |
| Jay Clutter Sale Committee Chairman | |

TERMS & CONDITIONS

The cattle sell under the standard terms and conditions as recommended by the American Angus Association. A copy of these terms is available at the sale. Cash, check and credit card payments will be accepted.

ABSENTEE BIDS

Buyers unable to attend the sale may send their bids to the Sale Manager, Auctioneer, Sale Representatives or bid online at CCI.Live

HEALTH OF CATTLE

All cattle will be accompanied with proper health papers for Interstate shipment. All cattle will be negative for BVD. All bulls will have passed Breeding Soundness Exams. Copies of Beef Expo health requirements are available upon request.

TRUCKING

Cattle are to be picked up from the O'Neill building at the conclusion of the sale and no later than 5:00 PM. Please contact sale manager if you need assistance with trucking.

VETERINARIAN

Office will also be in the O'Neill Building meeting room.

LIVESTOCK MORTALITY INSURANCE

May be purchased at the clerk's table.

BREEDING & GENETICS INFORMATION

A supplemental sheet will be available sale day with complete and up to date calving and breeding information. Announcements from the auction block take precedence over information listed in this book. Potential AM/NH/CA carries will be tested prior to sale day. No genetic defect carriers will sell.

EPD's current as of February 9, 2025. Weekly, EPD's are recalculated by the American Angus Association, which means the figures represented in this catalog may change for these animals in the future. Updated EPD's can be viewed at www.angus.org.

EXPO SALE OFFICE

The buyer registration/clerking tables for ALL BREEDS will be in the meeting room in the O'Neill building, adjacent to the breeds office. There will be no clerking tables in Voinovich near sale rings.

PARKING

Friday & Saturday only, special trailer parking for Ohio Beef Expo sale buyers will be available on the main part of the fairgrounds just east of the O'Neill Barn where the sale cattle are located. To access the parking area, cattle trailers should enter the fairgrounds off 11th Ave at the OHIO gate. This special trailer parking area is expected to fill up, so plan to arrive early. All other cattle trailers, including show and sale cattle exhibitor trailers and junior show trailers **MUST** park north of 17th Ave after unloading. Visit www.ohiobeefexpo.com for details and maps of the grounds.

REFRESHMENTS

Will be available throughout Expo. Join us at 10:30 AM before the sale for lunch and to view the lots in their stalls.

LODGING

Headquarters for the Ohio Beef Expo:
Hilton Columbus/Polaris
8700 Lyra Drive | Columbus, OH 43240

SALE SPONSORED & MANAGED BY

Ohio Angus Association

Jacy Bapst | Secretary/Fieldman
2404 Beaver Pike | Waverly, OH 45690
740-648-6531 | secretary@ohioangus.org

Sale Committee

Jay Clutter | Chairman
Fred Penick
Shawn Howell

2025 BEEF SCHEDULE

March 13-16, 2025 | Ohio Expo Center

WEDNESDAY, MARCH 12

No cattle are permitted on the fairgrounds before 7:30 a.m.

Noon - 5 p.m. Trade Show Large Equipment Move-in

**Arrival deadline for all breeds selling Friday, March 14

THURSDAY, MARCH 13

8 a.m. - 9 a.m. Judging Contest Check-in & Packet Pick-up, Coliseum
 8 a.m. - 12 p.m. Trade Show set up for large indoor equipment
 9 a.m. Breeds Check-in Begins, Breeds Building
 10 a.m. Judging Contest Begins, Coliseum
 10 a.m. Arrival deadline for all breeds selling Saturday, March 15 and others
 12 p.m. - 3 p.m. Trade Show set-up outdoor & small indoor displays
 2:30 p.m. Judging Contest Awards, Coliseum
 3 - 6 p.m. Trade Show Open, Voinovich Building
 4 - 8 p.m. Junior Show Check-in, Gilligan Complex
 7:30 p.m. The Social, Hilton Columbus/Polaris

FRIDAY, MARCH 14

8 a.m. - 11 a.m. Junior Show Check-in, Gilligan Complex
 8:30 a.m. - 6 p.m. Trade Show Open, Voinovich Building
 9 a.m. - 12 p.m. Cattlemen's Learning Center Sessions, Voinovich Building
 9:30 a.m. Youth Beef Quality Assurance, Coliseum
 10 a.m. - 5 p.m. Genetic Pathway Open, Breeds Building
 10 a.m. Mini Hereford Show, Cooper Arena
 11 a.m. Junior Showmanship, Coliseum - 2 rings
 12 p.m. Online Feeder Cattle Sale, Voinovich Building
 12:30 p.m. Hereford Show, Cooper Arena
 Shorthorn Parade, Cooper Arena
 1 p.m. Murray Grey Show, Breeds Building
 2 p.m. Angus Parade, Cooper Arena
 Limousin Sale, Voinovich Building
 3 p.m. Aberdeen Angus Sale, Voinovich Building
 4 p.m. Red Angus Sale, Voinovich Building
 4:30 - 5:30 p.m. Cowboy Happy Hour, Voinovich Building
 5 p.m. Shorthorn Sale, Voinovich Building
 5 - 6 p.m. Junior Show Check-in, Gilligan Complex

SATURDAY, MARCH 15

8 a.m. - 5 p.m. Junior Market Animal & BBS Show, Coliseum
 8:30 a.m. - 6 p.m. Trade Show Open, Voinovich Building
 9 a.m. Mini Hereford Sale, Voinovich Building
 10 a.m. Hereford Sale, Voinovich Building
 10 - 11 a.m. Junior Show Check-in, (Heifers Only), Gilligan Complex
 10 a.m. - 5 p.m. Genetic Pathway Open, Breeds Building
 11:30 a.m. Simmental Sale, Voinovich Building
 2 p.m. Angus Sale, Voinovich Building
 3:30 p.m. Maine Anjou Sale, Voinovich Building
 4 - 5 p.m. Cowboy Happy Hour, Voinovich Building
 6 p.m. deadline Junior Show Check-in for Expo Sale Heifers, Gilligan Complex

SUNDAY, MARCH 16

8 a.m. - 5 p.m. Junior Heifer Show & BBS Show, Coliseum
 8:30 a.m. - 2 p.m. Trade Show Open, Voinovich Building
 9 a.m. - 12 p.m. Cattlemen's Learning Center Sessions, Voinovich Building



T
H
E

S
C
H
E
D
U
L
E

ATTERHOLT FARMS

Claire & Natalie Atterholt
Loudonville, OH
(419) 651-6271
Lots 30, 31

CLAYLICK RUN FARM

David Felumlee
Newark, OH
(740) 404-3594
Lot 5

EGNER FARMS ANGUS

Kelvin Egner
Shelby, OH
(419) 295-6089
Lots 6, 7

GAHLER FARMS

Allen Gahler
Graytown, OH
(419) 350-2091
Lots 25, 25A, 27, 39

KINGSWAY ANGUS

John King
Tiffin, OH
(419) 937-4148
Lots 32, 35, 37

MAPLECREST FARMS

John Grimes
Hillsboro, OH
(937) 763-8115
Lots 15, 36

MOLLENKOPF CATTLE

Doug, Gwenna & Cody Mollenkopf
East Palestine, OH
(620) 794-3447
Lots 3, 4, 9

RAINS ANGUS

Dale Rains
Mercer, PA
(724) 854-7200
Lots 12, 13, 33, 34

BAPST CATTLE

Ryan & Jacy Bapst
Beaver, OH
(740) 835-9789
Lots 22, 23

CONNY GRAIN & CATTLE

Mike Conny & Chad Raber
Beloit, OH
Chad Raber (330) 341-0090 | Henry Bergfeld (330) 223-1872
Lots 20, 21

FLATLAND ACRES ANGUS

John Miller
Shreve, OH
(330) 600-9720
Lots 18, 19

HFS ANGUS

Tim & Elizabeth Harsh
Radnor, OH
(740) 225-2443
Lots 26, 28, 29

LUCCI FARMS

Chad Lucci
Wooster, OH
(330) 465-4256
Lot 10

McFARLAND FARMS

Mark McFarland | Dylan Crall
Belmont, OH
(740) 827-3800
Lots 14, 16

PARADISE CATTLE COMPANY

Jim, Sharon, Christina and Caroline Winter
Ashville, OH
Jim (740) 808-1365 | Sharon (740) 808-1366
Lots 1, 8, 11, 24+A

SCHEURMAN FAMILY ANGUS

Anna Scheurman
Warsaw, OH
(330) 206-5523
Lots 2, 17

SCIOTO VALLEY ANGUS

Dean Knepp
McArthur, OH
(740) 656-0902 | (740) 656-0049
Lot 38

MAKE YOUR CATTLE STAND OUT



You've made a significant investment in your genetics, but does the market recognize that? Stand out by differentiating our cattle with AngusLinkSM programs: the Genetic Merit ScorecardSM and AngusVerifiedSM.

ANGUSLINKSM
**GENETIC
MERIT**
SCORECARDSM

The Genetic Merit Scorecard gives buyers the confidence they need to pay more for your quality calves.

ANGUS
VERIFIEDSM

AngusVerified validates your calves are sired by registered Angus bulls and make your cattle stand apart from other black hides on sale day.

Users of AngusLink programs earn **\$13-15/CWT PREMIUMS** on average. Give us a call, and learn how to claim your competitive edge with AngusLink value-added programs.

ANGUSLINKSM
VALUE ADDED PROGRAMS

ANGUSLINK.COM | 816-383-5100

The Genetic Merit Scorecard and AngusVerified are administered by IMI Global.

PARADISE ANNUNITY 308

BD: 1/6/23 Bull 20809553 Tattoo: P308



Car Don Annuity 114
*19720973
Paradise Kendall 107
20241604

##*Deer Valley Growth Fund
**CAR Don Blackbird 935
##*SAV Rainfall 6846
Paradise Kendall 534

##*Basin Payweight 1682
**Deer Valley Rita 36113
##*Quaker Hill Rampage 0A36
**EF Blackbird 3241
##*Coleman Charlo 0256
*SAV Blackcap May 4136
#SAV Pioneer 7301
Paradise Kendall 238

| CED | BW | WW | YW | Milk | DOC | SC | HP | Claw | Angle |
|-----|-----|-----|-----|------|-----|------|-----|------|-------|
| 8 | 0.6 | 83 | 145 | 26 | 20 | 0.56 | 8.4 | 0.5 | 0.47 |
| 35% | 35% | 15% | 15% | 50% | 50% | 75% | 90% | 55% | 50% |

| CW | Marb | REA | Fat | \$M | \$W | \$B | \$C |
|-----|------|------|-------|-----|-----|-----|-----|
| 62 | 0.32 | 0.79 | 0.021 | 54 | 78 | 139 | 234 |
| 35% | 90% | 40% | 55% | 80% | 15% | 65% | 75% |

Consigned by Paradise Cattle Company

Paradise Annunity 308 is a 2yr old bull that was used to cleanup with last summer on a group of cows. He had a weaning weight ratio of 111 on a first calf heifer.

- Actual birth weight was 69 lb
- Herd Certified & Accredited and Johne's Level 4 Negative



Sire of Lot 1: Car Don Annuity 114

SCH EL REY 233

4/13/23 Bull *20846087 Tattoo: 233



Blacktop Bipartisan 0839
*19871908
Blacktop Rosalie 839

##*GAR Ashland
*GAR Early Bird
**Chair Rock Ambush 1018
##*TEX Playbook 5437
Blacktop Rosalie 536
##*SAV Brilliance 8077
**PVF Missie 790
Bushs Absolute Power
Wards Rose Lee 6110

SCC SH Girl Power 630
18584106
RLH Ms Absolute Power 460

| CED | BW | WW | YW | Milk | DOC | SC | HP | Claw | Angle |
|-----|------|-----|-----|------|-----|------|-----|------|-------|
| 13 | -1.5 | 72 | 127 | 32 | 18 | 0.78 | 9 | 0.51 | 0.53 |
| 10% | 10% | 35% | 35% | 15% | 60% | 60% | 85% | 60% | 80% |

| CW | Marb | REA | Fat | \$M | \$W | \$B | \$C |
|-----|------|------|--------|-----|-----|-----|-----|
| 57 | 0.17 | 0.83 | -0.001 | 63 | 80 | 136 | 239 |
| 45% | 95% | 35% | 30% | 55% | 10% | 70% | 70% |

Consigned by Scheurman Family Angus

SCH El Rey 233 is a sound, true calving ease bull. His actual birth weight of 59 pounds combined with his CED and BW EPDs puts him in the top 10% of the breed. He also offers excellent growth traits, being in the top 35% of the breed in WW and YW. Anyone with a group of heifers or young females will want this bull, his heifer calves will grow fast and produce plenty of milk. He also has above average for REA, CW and Fat for the terminal breeders. He has been shown successfully this past season and is easy to handle. This is bull you will want to add to your herd!



/M/ RAWHIDE 320

BD: 9/10/23 Bull 20966955 Tattoo: 320



Poss Rawhide
*19416968
Mollenkopf Barbara 515
18559949

##*Poss Maverick
**Poss Blueblood 6502
##*Summitcrest Focus 2U66
Mollenkopf Barbara 310

##*Basin Payweight 1682
Poss Pride 5163
Poss Easy Impact 0119
Poss Blueblood 920
##*Mytty In Focus
Summitcrest Elba 1M17
##*Connealy Consensus 7229
Clarks MS Rito 2468

| CED | BW | WW | YW | Milk | DOC | SC | HP | Claw | Angle |
|-----|------|-----|-----|------|-----|-----|------|------|-------|
| 10 | -0.2 | 80 | 130 | 28 | 37 | 0.7 | 11.9 | 0.66 | 0.5 |
| 25% | 20% | 20% | 30% | 35% | 1% | 65% | 60% | 95% | 65% |

| CW | Marb | REA | Fat | \$M | \$W | \$B | \$C |
|-----|------|------|-------|-----|-----|-----|-----|
| 66 | 0.48 | 0.63 | 0.064 | 65 | 83 | 154 | 265 |
| 25% | 75% | 60% | 95% | 50% | 10% | 45% | 45% |

Consigned by Mollenkopf Cattle

A high performance son of Poss Rawhide, backed by an impressive pedigree this bull offers growth, maternal traits, and carcass quality. With a pedigree that promises both performance and profitability, Rawhide 320 is poised to make a significant impact in any breeding program.

- Top 1% Docility
- Top 10% \$W





4 /M/ RAWHIDE 326

BD: 9/13/23

Bull 20966954

Tattoo: 326

ANGUSGS
Powered by NEOGEN

Poss Rawhide
+19416968

#*Poss Maverick

+*Poss Blueblood 6502

Mollenkopf Erica 919
19826438

+*SAV Supercharger 6813

Mollenkopf Erica 517

#*Basin Payweight 1682
Poss Pride 5163
Poss Easy Impact 0119
Poss Blueblood 920
#*SAV Recharge 3436
SAV Madame Pride 0075
#*Mohnen Long Haul 502
Clarks Erica 6863

| CED | BW | WW | YW | Milk | DOC | SC | HP | Claw | Angle |
|-----|------|-----|-------|------|-----|------|------|------|-------|
| 6 | 0.9 | 80 | 133 | 29 | 33 | 1.12 | 11.4 | 0.5 | 0.45 |
| 55% | 45% | 20% | 25% | 30% | 2% | 35% | 65% | 55% | 40% |
| CW | Marb | REA | Fat | \$M | \$W | \$B | \$C | | |
| 60 | 0.84 | 0.8 | 0.001 | 64 | 80 | 168 | 282 | | |
| 35% | 40% | 35% | 30% | 55% | 10% | 30% | 30% | | |

Consigned by Mollenkopf Cattle

This rugged made bull will add some growth to your calves. He's a big, stout and long sided bull who doesn't sacrifice structure. A truly balanced package.

- Top 20% WW
- Top 25% YW



5 CLAYLICK RUN TRADE UP K059

BD: 10/14/23

Bull +*21044744

Tattoo: K059

ANGUSGS
Powered by NEOGEN

Connealy Commerce
20132642

+*GAR Sunbeam

*Avira of Conanga 814R

B&J Georgina 7721
18891818

#*Mill Brae Identified 4031

*B&J Georgina 5521

#*GAR Sunrise
*GAR Ingenuity 3132
*Connealy Cade
*Avie of Conanga 624P
#*Koupals B&B Identity
*Mill Brae Pro Blackcap 1092
#*Connealy Comrade 1385
B&J Georgina 3021

| CED | BW | WW | YW | Milk | DOC | SC | HP | Claw | Angle |
|-----|------|------|-------|------|-----|------|------|------|-------|
| 13 | 0 | 83 | 138 | 32 | 23 | 1.19 | 16.8 | 0.46 | 0.45 |
| 10% | 25% | 15% | 20% | 15% | 35% | 30% | 15% | 40% | 40% |
| CW | Marb | REA | Fat | \$M | \$W | \$B | \$C | | |
| 59 | 0.67 | 1.17 | -0.04 | 111 | 95 | 158 | 316 | | |
| 40% | 55% | 10% | 5% | 1% | 1% | 40% | 15% | | |

Consigned by Claylick Run Farm

Claylick Run Trade Up K059 may be the best all around bull to ever be offered by Claylick Run. He has the entire package: looks, performance, tremendous EPD profile, and a cutting edge pedigree. Connealy Commerce is one of the most heavily used angus bulls in the breed today. K059's dam, Georgina 7721 has been the lead donor at Claylick Run and Wells Livestock the past several years and may be the most powerful identified daughter in the Angus breed. A maternal brother to Trade Up was a \$9500 feature of the 2024 National Angus Bull Sale.



6 EGNERS DYNAMIC M018

BD: 11/26/23

Bull *21049383

Tattoo: M018

ANGUSGS
Powered by NEOGEN

BAR Dynamic
19923789

#*Deer Valley Growth Fund

+*BAR Blackcap 7235-B0048

Egners Royal Queen E609
18984856

#*KG Solution 0018

Egners Royal Queen A452

#*Basin Payweight 1682
+*Deer Valley Rita 36113
+*Three Trees Xceptional B0048
+*BAR Blackcap 3683-745
#MOGCK Sure Shot
KG Rito Lady 8724
#SAV Pioneer 7301
PVF Royal Queen 0111

| CED | BW | WW | YW | Milk | DOC | SC | HP | Claw | Angle |
|-----|------|------|-------|------|-----|------|------|------|-------|
| 12 | -2 | 83 | 140 | 30 | 18 | 0.41 | 10.9 | 0.46 | 0.35 |
| 10% | 4% | 15% | 20% | 25% | 60% | 80% | 70% | 40% | 5% |
| CW | Marb | REA | Fat | \$M | \$W | \$B | \$C | | |
| 50 | 1.07 | 0.07 | 0.043 | 71 | 90 | 148 | 263 | | |
| 60% | 20% | 95% | 80% | 35% | 2% | 55% | 50% | | |

Consigned by Egner Farms Angus

Egners Dynamic M018 is a well-balanced bull with outstanding EPDs and his physical presence starts with impressive muscle, base width and internal dimension wrapped up in an attractive package just as his sire.

- Actual Birth weight was 68 lb
- Top 10% CED
- Top 4% BW
- Top 15% WW
- Top 20% YW



7 EGNERS WILDCAT M036

BD: 12/9/23

Bull *21049386

Tattoo: M036

ANGUSGS
Powered by NEOGEN

E&B Wildcat 9402
19810163

+*GAR Discovery 6737H

E&B Lady Plus 643

Egners Primrose H751
19934086

#*GAR Ashland

Egners Primrose E630

#*VAR Discovery 2240
*GAR Ingenuity 3132
#*Connealy Confidence Plus
#*E&B Lady Credence 190
*GAR Early Bird
+*Chair Rock Ambush 1018
#*Barstow Bankroll B73
Egners Primrose U275

| CED | BW | WW | YW | Milk | DOC | SC | HP | Claw | Angle |
|-----|------|------|------|------|-----|------|------|------|-------|
| 15 | 0.3 | 83 | 145 | 15 | 26 | 0.07 | 12.5 | 0.49 | 0.49 |
| 3% | 30% | 15% | 15% | 95% | 20% | 95% | 50% | 50% | 60% |
| CW | Marb | REA | Fat | \$M | \$W | \$B | \$C | | |
| 62 | 0.83 | 0.84 | 0.02 | 64 | 68 | 166 | 279 | | |
| 35% | 40% | 35% | 55% | 55% | 35% | 35% | 35% | | |

Consigned by Egner Farms Angus

Egners Wildcat M036 is truly a unique sire that is as impressive on paper as he is in the flesh. Offering excellent structural integrity and a well-balanced phenotype that catches the eye.

- Actual birth weight was 74 lb
- Top 3% CED
- Top 15% WW & YW



PARADISE EXEMPLIFY 404

BD: 1/8/24 Bull 20977890 Tattoo: P404



8

Linz Exemplify 71124
*19265123

#*Connealy Confidence Plus
*MAR Erica 1617

Paradise Belle 124
20241607

#*SAV Raindance 6848
#Paradise Belle 713

#*Connealy Confidence 0100
Elbanna of Conanga 1209
#*RB Tour Of Duty 177
+*MAR Erica Rito 1402

#*Coleman Charlo 0256
*SAV Blackcap May 4136
#*EXAR Upshot 0562B
Paradise Belle 630

| CED | BW | WW | YW | Milk | DOC | SC | HP | Claw | Angle |
|-----|------|-----|-----|------|-----|-----|------|------|-------|
| 12 | -0.7 | 68 | 127 | 20 | 23 | 0.4 | 10.7 | 0.47 | 0.46 |
| 10% | 15% | 50% | 35% | 90% | 35% | 80% | 70% | 40% | 45% |

| CW | Marb | REA | Fat | \$M | \$W | \$B | \$C |
|-----|------|------|--------|-----|-----|-----|-----|
| 61 | 1.05 | 0.66 | -0.004 | 64 | 62 | 190 | 310 |
| 35% | 25% | 55% | 25% | 55% | 50% | 15% | 15% |

Consigned by Paradise Cattle Company

Paradise Exemplify 404 was the 2024 Ohio State Fair Champion Bull Calf. He comes from our famous Belle family and is as thick as they come. 404 had a weaning weight ratio of 106.

- Actual birth weight was 62 lb
- Herd Certified & Accredited and John's Level 4 Negative



/M/ RAWHIDE 401

BD: 1/12/24 Bull *21061956 Tattoo: 401



9

Poss Rawhide
*19416968

#*Poss Maverick
+*Poss Blueblood 6502

Mollenkopf Elba 124
20480284

*C Bar Uncontested 6209
Mollenkopf Elba 722

#*Basin Payweight 1682
Poss Pride 5163
Poss Easy Impact 0119
Poss Blueblood 920

#*SAV Ten Speed 3022
*C Bar Forever Lady 405
#*Mohnen Impressive 1093
Mollenkopf Elba 401

| CED | BW | WW | YW | Milk | DOC | SC | HP | Claw | Angle |
|-----|-----|-----|-----|------|-----|------|------|------|-------|
| 11 | 0 | 80 | 130 | 20 | 28 | 1.07 | 11.4 | 0.62 | 0.52 |
| 15% | 25% | 20% | 30% | 90% | 15% | 40% | 65% | 95% | 75% |

| CW | Marb | REA | Fat | \$M | \$W | \$B | \$C |
|-----|------|------|-------|-----|-----|-----|-----|
| 58 | 0.86 | 1.17 | 0.007 | 64 | 76 | 172 | 287 |
| 40% | 35% | 10% | 40% | 55% | 15% | 25% | 30% |

Consigned by Mollenkopf Cattle

Rawhide 401 has a pedigree packed with longevity, efficiency and productivity. His genetic foundation from Poss Rawhide makes him a versatile sire option for both registered and commercial programs.

- Top 15% CED
- Top 10% REA



LUCCI MR CADILLAC M92

BD: 1/13/24 Bull *21063918 Tattoo: M92



10

KR Cadillac Ranch
*18875651

+*KR Cadillac Jack
+*KR Pride 4031

Ingram Dixie Erica 1031
*19985225

+*SAV Emblem 8074
+*Ingram Dixie Erica 8574

*CFCC Black Jack 001
WK Blackbird 5066
#*Barstow Cash
Summitcrest Pride 07X3

#*SAV Raindance 6848
#*SAV Emblynette 2369
+*Buford Pathfinder C304
+*Coleman Dixie Erica 8271

| CED | BW | WW | YW | Milk | DOC | SC | HP | Claw | Angle |
|-----|-----|-----|-----|------|-----|-------|------|------|-------|
| -5 | 2.6 | 67 | 125 | 23 | 20 | -0.94 | 11.1 | 0.57 | 0.5 |
| 95% | 80% | 50% | 40% | 70% | 50% | 95% | 65% | 80% | 65% |

| CW | Marb | REA | Fat | \$M | \$W | \$B | \$C |
|-----|------|------|--------|-----|-----|-----|-----|
| 54 | 0.13 | 0.73 | -0.018 | 35 | 50 | 132 | 206 |
| 50% | 95% | 45% | 15% | 95% | 80% | 75% | 90% |

Consigned by Lucci Farms

Here is an attractive, yet rugged and stout, January bull. He's extended fronted, big hipped and soft sided. He's out of KR Cadillac Ranch and an Ingram Dixie Erica dam. Be sure to check him out on sale day.

- Top 15% Fat



9

SUPER STAR SALE

THE BULLS



Sire of Lot 11: Werner Flat Top 4136

11 PARADISE FLAT TOP 421

BD: 1/19/24 Bull 21081812 Tattoo: P421



#*Connealy Black Granite
Werner Flat Top 4136
#18094501
#*Werner Lady 0304
#SydGen Enhance
Paradise Erica 217
20542836
Paradise Erica 739
#*Connealy Consensus 7229
#Eura Elga of Conanga 9109
#CRA Bextor 872 5205 608
+*SandPoint Lady 7869
#*SydGen Exceed 3223
SydGen Rita 2618
#*Barstow Cash
Paradise Erica 433

| CED | BW | WW | YW | Milk | DOC | SC | HP | Claw | Angle |
|-----|------|-----|-----|------|-----|------|------|------|-------|
| 11 | -0.1 | 72 | 140 | 27 | 22 | 1.32 | 12.4 | 0.45 | 0.6 |
| 15% | 25% | 35% | 20% | 40% | 40% | 25% | 55% | 35% | 95% |

| CW | Marb | REA | Fat | \$M | \$W | \$B | \$C |
|-----|------|------|------|-----|-----|-----|-----|
| 75 | 0.64 | 1.02 | 0.01 | 51 | 66 | 189 | 296 |
| 10% | 60% | 15% | 40% | 85% | 40% | 15% | 25% |

Consigned by Paradise Cattle Company

Paradise Flat Top 421 is an all around bull that combines looks plus a balance set of EPD's to go with a solid pedigree. His dam is also selling in this sale. 421 had a weaning ratio of 113.

- Actual birth weight was 77 lb
- Herd Certified & Accredited and Johne's Level 4 Negative



12 RAINS SAFETY SSGF

BD: 2/10/24 Bull 21027563 Tattoo: R94



#*Mill Brae Identified 4031
HF Safe & Sound 019
*19705988
*HF Empress 804
#*Granger Great Falls 053
Rains Skylight Falls GFMI
20136108
Rains Skylight Vision MICsFm
#*Koupals B&B Identity
*Mill Brae Pro Blackcap 1092
#*TEX Playbook 5437
+*HF Empress 6007
#*SAV Final Answer 0035
Granger Pride 275
Musgrave Invision
Rains Skylight Pearlette CSP

| CED | BW | WW | YW | Milk | DOC | SC | HP | Claw | Angle |
|-----|-----|-----|-----|------|-----|------|-----|------|-------|
| 6 | 2.6 | 73 | 126 | 32 | 19 | 1.76 | 9.5 | 0.48 | 0.53 |
| 55% | 80% | 35% | 40% | 15% | 55% | 10% | 80% | 45% | 80% |

| CW | Marb | REA | Fat | \$M | \$W | \$B | \$C |
|-----|------|------|-------|-----|-----|-----|-----|
| 43 | 0.28 | 0.41 | 0.042 | 66 | 74 | 108 | 206 |
| 80% | 90% | 85% | 75% | 45% | 20% | 95% | 90% |

Consigned by Rains Angus

A stout made son of "Safe and Sound", a Select Sires calving ease sire who stamps his progeny with extra look and fleshing ability. Safety comes with added length of side, bone, muscle and capacity. His pedigree combines "Identified", "Tex Playbook", "Final Answer" and "Musgrave Invision". Moderate birth EPD, High WW and YW.

- Top 10 % for Scrotal
- Top 15% for Milk
- Actual Birth Weight was 83 lb and 205 Day Adj Wt was 752 lb



13 RAINS DUALY DLCFBR

BD: 2/14/24 Bull 21040100 Tattoo: R114



#*DL Dually
Panther Cr Dually 0262
19962896
#Panther Cr Blackcap 128
#*Connealy Confidence 0100
Rains Sunlight Donna
17866056
CfBrLo
Rains Sunlight Halo BrLO
#DL Sonic 444
*DL Incentive 2103
PVR 263C 878
Panther Cr W Blackcap 903
Connealy Tobin
Becka Gala of Conanga 8281
#*SAV Brilliance 8077
Rains Sunlight Halo Lo878

| CED | BW | WW | YW | Milk | DOC | SC | HP | Claw | Angle |
|-----|------|-----|-----|------|-----|------|-----|------|-------|
| 11 | -1.7 | 65 | 113 | 21 | 12 | 0.73 | 9.3 | 0.64 | 0.54 |
| 15% | 5% | 55% | 60% | 85% | 85% | 65% | 85% | 95% | 85% |

| CW | Marb | REA | Fat | \$M | \$W | \$B | \$C |
|-----|------|-------|-------|-----|-----|-----|-----|
| 44 | 0.73 | -0.11 | 0.108 | 62 | 67 | 122 | 220 |
| 75% | 50% | 95% | 95% | 60% | 35% | 85% | 85% |

Consigned by Rains Angus

- The Reserve Grand Champion Angus bull at the 2025 PA Farm Show! His maternal brother was the 2024 Grand Champion bull of the 2024 Farm Show. Wide based, structurally correct and a super disposition. Calving ease specialist with a CED of 11 and BW -1.7. His Dam has a nursing ratio of 7 at 107. He has an eye appealing pedigree with performance and phenotype. Dam is in top 20% \$M.

- Actual birth weight of 76 lb
- 202 day adj Wt 827 lb with a ratio of 109

MM TAHOE

BD: 2/24/24 Bull 21137534 Tattoo: 2441

Tehama Tahoe B767
#*17817177

*Tehama Upward Y238
*Tehama Mary Blackbird Y684

SAR Georgina 2045
20329332

CHAMPION HILL Bismarck
6856
*Champion Hill Georgina 8669

#*Sitz Upward 307R
Tehama Elite Blackbird T735
#*SAV Final Answer 0035
Tehama Mary Blackbird T073

#*SAV Bismarck 5682
Champion Hill Georgina 8386
*SAV Perfection 1891
Champion Hill Georgina 7225

| CED | BW | WW | YW | Milk | DOC | SC | HP | Claw | Angle |
|-----|-----|-----|-----|------|-----|----|----|------|-------|
| 8 | 0.9 | 68 | 114 | 25 | | | | | |
| 35% | 45% | 50% | 60% | 55% | | | | | |

| CW | Marb | REA | Fat | \$M | \$W | \$B | \$C |
|----|------|-----|-----|-----|-----|-----|-----|
| | | | | 82 | 61 | | |
| | | | | 15% | 55% | | |

Consigned by McFarland Farms

A son of Tehama Tahoe who is widely recognized for his ability to add muscle, growth, and efficiency. This bull offers calving ease and growth. We are looking forward to seeing his DNA come back to fill out the remainder of his EPD profile.



14

MAPLECREST TOP CUT J4133

BD: 2/28/24 Bull *21045285 Tattoo: J4133

Yon Top Cut G730
*19476453

#*Spring Cove Reno 4021
*Yon Sarah D668

Maplecrest Fanny 8017
*19289217

#*GAR Proactive
*SJH Ms Confidence 170

#*KM Broken Bow 002
*Spring Cove Liza 021
*VAR Discovery 2240
*Yon Sarah A615

#*GAR Prophet
*GAR Daybreak 1521
*Connealy Confidence 0100
*2 Bar Mile High 9360

| CED | BW | WW | YW | Milk | DOC | SC | HP | Claw | Angle |
|-----|-----|-----|-----|------|-----|------|------|------|-------|
| 11 | 0.6 | 71 | 119 | 24 | 19 | 0.55 | 20.4 | 0.41 | 0.34 |
| 15% | 35% | 40% | 50% | 65% | 55% | 75% | 2% | 20% | 4% |

| CW | Marb | REA | Fat | \$M | \$W | \$B | \$C |
|-----|------|------|--------|-----|-----|-----|-----|
| 48 | 1.14 | 1.15 | -0.049 | 124 | 79 | 171 | 346 |
| 65% | 20% | 10% | 3% | 1% | 15% | 30% | 4% |

Consigned by Maplecrest Farms

One of our favorite crosses that we keep making over and over, because it is just that good. Here is a Top Cut out of the \$10,000 top selling fall calver in our 2023 Production Sale. This combination produces consistently high marbling with exceptional \$M & \$C indexes and J4133 is no exception. Furthermore, this stand out herd sire prospect features exceptional power and internal dimension in an extremely functional build that is designed for the long haul. J4133 truly embodies everything you want and need in an Angus herd sire.



15

MM DEER VALLEY

BD: 2/28/24 Bull 21160690 Tattoo: 2445

Deer Valley Growth Fund
#*18827828

#*Basin Payweight 1682
*Deer Valley Rita 36113

Sar Blackclass 2047
20193914

The Hollybrook Hercules 727
The Hollybrook Blackclass 673

#*Basin Payweight 006S
21AR O Lass 7017
#*Plattmehre Weigh Up K360
Deer Valley Rita 9457

EXAR Top Game 4285B
The Hollybrook Laney 434
EXAR Top Game 4285B
The Hollybrook Blackclass 581

| CED | BW | WW | YW | Milk | DOC | SC | HP | Claw | Angle |
|-----|-----|-----|-----|------|-----|----|----|------|-------|
| 8 | 1.4 | 68 | 125 | 27 | | | | | |
| 35% | 55% | 50% | 40% | 40% | | | | | |

| CW | Marb | REA | Fat | \$M | \$W | \$B | \$C |
|----|------|-----|-----|-----|-----|-----|-----|
| | | | | 75 | 57 | | |
| | | | | 25% | 65% | | |

Consigned by McFarland Farms

A son of Deer Valley Growth Fund, who is one of the breed's elite sires for growth, muscle and carcass value. This bull offers a lot of growth potential, and we are excited to see the what performance results come back with this bull's DNA results.



16



11

SUPER STAR SALE

17 SCH IMPACT 242



Sire of Lot 17: HPCA Veracious

| BD: 3/1/24 | Bull 21148917 | Tattoo: 242 |
|--------------------------------------|--|--|
| HPCA Veracious +*19699322 | #*Mill Brae Identified 4031 +*HPCA Sunrise A246 | #*Koupals B&B Identity *Mill Brae Pro Blackcap 1092 #*GAR Sunrise +*HPCA Prophet A3 +*KR Cash 4010 #Lazy JB Blackbird Zena 428 #*PVF Insight 0129 RLH Ms Absolute Power 460 |
| SCH Power Girl Pride 203 19820023 | *Lazy JB Sundance 6428 SCC SH Girl Power 630 | |

| CED | BW | WW | YW | Milk | DOC | SC | HP | Claw | Angle |
|-----|------|------|-------|------|-----|-------|-----|------|-------|
| 4 | 2.8 | 67 | 120 | 25 | 17 | -0.06 | 8.5 | 0.47 | 0.4 |
| 70% | 85% | 50% | 50% | 55% | 65% | 95% | 90% | 40% | 20% |
| CW | Marb | REA | Fat | \$M | \$W | \$B | \$C | | |
| 64 | 1.06 | 1.21 | 0.059 | 64 | 60 | 192 | 313 | | |
| 30% | 25% | 5% | 90% | 55% | 55% | 15% | 15% | | |

Consigned by Scheurman Family Angus

A great bull to add to your herd! His growth numbers will help add pounds along with his 45% of the Angus Breed in RADG. His carcass numbers are even better when you look at his Marb and REA. SCH Impact has exceptional \$ value numbers ranking him in the top 15% of the breed. With those numbers not only is he appealing to the beef guys, the dairy guys wanting to breed a group of females could use him to get those high dollar cross calves. This is one attractive bull that has the numbers behind him which will make you very happy with your purchase.

BULL SALE REQUIREMENTS

- All bulls are born on or before March 1, 2024
- All bulls have been DNA tested (Angus GS or HD50K)
- All bulls have passed a Breeding Soundness Exam (BSE) within 30 days of the sale
- All bulls rank in the top 50% of the breed for at least 3 of the following traits: CED, BW, WW, YW, Marb, REA, SC, HP & \$M

18 HEIFER PREGNANCY

Due: End of March

Consigned by Flatland Acres Angus

A stellar opportunity for a heifer pregnancy by the famous Ellingson Prolific from the donor dam that sold for \$29,000 at the 2023 Boyd Sale - Boyd Abigale. This donor is a full sister to the \$80,000 Genex sire Boyd Thunderstruck.

The recip cow is due end of March. The buyer can leave recip on our farm to calve, but needs moved by May 1st, live heifer guaranteed or money back less commission.



Boyd Abigale 2301

| | | |
|---------------------------------|---|---|
| Ellingson Prolific *20136857 | *Ellingson Profound 8155 #EA Queen 8070 +*BJ Surpass +*Boyd Abigale 6079 | #*S Powerpoint WS 5503 #*EA Rosetta 6157 #Koupal Juneau 797 EA Queen 2350 #*TEX Playbook 5437 +*BJ Prophet 5275 #Connealy Thunder *Boyd Abigale 0001 |
|---------------------------------|---|---|

| Sire | CED | BW | WW | YW | Milk | Claw | Angle | Marb | REA | \$M | \$W | \$B | \$C |
|------|-----|-----|-----|-----|------|------|-------|------|-----|-----|-----|-----|-----|
| 0 | 4 | 85 | 142 | 13 | .18 | .22 | .70 | .61 | 104 | 60 | 178 | 335 | |
| 90% | 95% | 10% | 15% | 1% | 1% | 1% | 40% | 55% | 1% | 55% | 20% | 5% | |
| Dam | CED | BW | WW | YW | Milk | Claw | Angle | Marb | REA | \$M | \$W | \$B | \$C |
| 8 | -1 | 73 | 130 | 34 | .46 | .43 | .44 | .49 | 85 | 83 | 141 | 268 | |
| 30% | 20% | 20% | 15% | 10% | 30% | 20% | 65% | 60% | 5% | 3% | 45% | 25% | |

Ellingson Prolific

3 IVF EMBRYOS

19

Consigned by Flatland Acres Angus

The exciting opportunity to own frozen embryos sired by the industry benchmark sire, Marcys Scale Crusher and the Montana Miss Amy 7164 donor from the Flatland Acres program.

Miss Amy was the featured selection of Flatland Acres through the 2022 Montana Angus Ranch Female Sale for her elite combination of eye appeal and maternal merit.

Miss Amy 7164 is produced from a dam who served as a donor at Montana Ranch, now at Thomson Land & Livestock. This gorgeous, feminine and broody female posts a progeny record of BR3@94; WR 3@101; YR 2@106 and RE 2@107 including a son, War Party 9290, working in the DC Smith herd in OK.

Offering three IVF conventional (unsexed) embryos produced by Trans Ova. We will guarantee one pregnancy if implanted by a certified embryologist. If shipping is needed, the expense will fall to the buyer.



Montana Miss Amy 7164

Marcys Scale Crusher
*16705566

##Sitz Upward 307R
##Marcys Erica 393

Montana Miss Amy 7164
*18844636

##Coleman Charlo 0256
*M A R Miss Amy 1348

*Connealy Onward
*Sitz Henrietta Pride 81M
*Leachman Right Time
G Marcy Erica 118
*O C C Paxton 730P
+Bohi Abigale 6014
*A A R Ten X 7008 S A
CAR Miss Amy 591

| Sire | CED | BW | WW | YW | Milk | Claw | Angle | Marb | REA | \$M | \$W | \$B | \$C |
|------|-----------|------------|-----------|------------|-----------|------------|------------|------------|-------------|-----------|-----------|------------|------------|
| | 11 20% | 1 45% | 71 35% | 133 25% | 22 75% | .41 20% | .35 4% | .11 95% | 1.12 10% | 68 35% | 60 55% | 158 35% | 273 35% |
| Dam | CED | BW | WW | YW | Milk | Claw | Angle | Marb | REA | \$M | \$W | \$B | \$C |
| | 6 45% | 1.4 50% | 63 45% | 117 35% | 27 45% | .41 15% | .44 25% | .55 50% | .38 75% | 75 15% | 67 25% | 116 80% | 225 65% |



Marcys Scale Crusher

3 IVF EMBRYOS

20 & 21

Consigned by Conny Grain & Cattle

The unique opportunity to own Trans Ova IVF embryos sired by POWERCAT, a breed leader for MARB, REA, \$B and \$C. However, he offers so much more with great predictions for CE, YW, RADG, HP, DOC, CLAW and ANGLE.

Pine Hill Princess F030 produced a Hometown daughter that topped the 2021 Mercer Pine Hill sale at \$13,000 going to Birk Genetics in MO. F030 is a direct daughter of the \$10,000 Pine Hill Donor Princess 2Y27, sired by the female maker, Reno 4021. F030 has the lot 133 Bull in the 44 Farms sale that has a 1513 lb adj YW - one of only 7 bulls over 1500 pounds YW in the sale.

Offering 2 lots of three IVF conventional (unsexed) embryos produced by Trans Ova. We will guarantee one pregnancy for each lot if implanted by a certified embryologist. If shipping is needed, the expense will fall to the buyer.



Summitcrest Princess 2Y2: Dam of Pine Hill Princess Fo30

G A R Powercat
*20665222

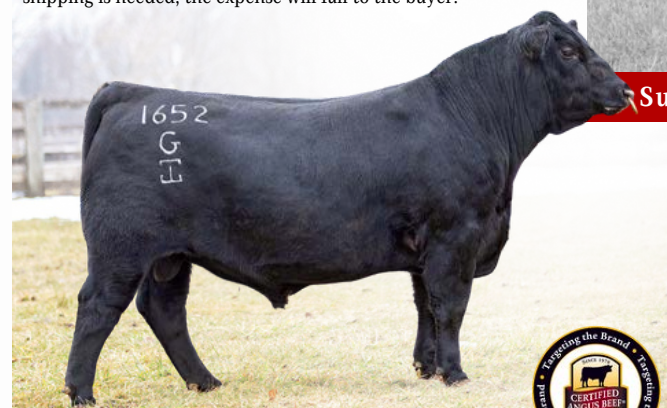
*E & B Wildcat 9402
*Daltons Rita 0206

Pine Hill Princess F030
*19439190

*Spring Cove Reno 4021
Summitcrest Princess 2Y27

*GAR Discovery 6737H
E&B Lady Plus
*GB Fireball 672
*Daltons Rita 8225
*KM Broken Bow 002
*Spring Cove Liza 021
*Sitz Upward 307R
Summitcrest Princess 1S58

| Sire | | | | | | | | | | | | | |
|------|-----|-----|-----|-----|------|------|-------|------|------|-----|-----|-----|-----|
| | CED | BW | WW | YW | Milk | Claw | Angle | Marb | REA | \$M | \$W | \$B | \$C |
| | 15 | .5 | 78 | 149 | 27 | .45 | .44 | 1.67 | 1.29 | 66 | 71 | 251 | 392 |
| | 3% | 20% | 20% | 10% | 45% | 35% | 30% | 2% | 3% | 45% | 25% | 1% | 1% |
| Dam | | | | | | | | | | | | | |
| | CED | BW | WW | YW | Milk | Claw | Angle | Marb | REA | \$M | \$W | \$B | \$C |
| | 8 | 1.4 | 66 | 109 | 25 | .45 | .50 | .61 | .46 | 77 | 66 | 120 | 233 |
| | 30% | 50% | 35% | 45% | 55% | 30% | 60% | 45% | 65% | 15% | 25% | 75% | 55% |



G A R Powercat

13

SUPER STAR SALE

T
H
E
E
M
B
R
Y
O
S

22 3 CONVENTIONAL EMBRYOS



Silveiras Saras Dream 1321: Full Sister to Embryos

GCC New Game 5654C
+*18324437

*Dameron First Class
+*Duff NE 9375 Georgina 845

Silveiras Saras Dream 5535
+*18416550

+*Silveiras S Sis GQ 2353
+EXG Saras Dream S609 R3

EXG RS First Rate S903 R3
Dameron Northern Miss 3114
+*Duff New Edition 6108
WK Georgina 9375
+*Silveiras Style 9303
*K N C Cabin Creek Sandy 804
#BR Midland
Exar Saras Dream 9809

Consigned by Bapst Cattle

A proven mating combining some of the most bulletproof show heifer genetics in the breed. The Saras Dream line of highly popular females needs no introduction, and Sara's Dream 5535 had a successful show career for the Anderson family of IL.

New Game stems from the coveted Georgina family and has a proven track record of producing top sellers with success in the showing. This mating is sure to produce calves that are phenotypic standouts with plenty of cow power to produce champions down the road.

Package of 3 Unsexed Conventional embryos, one pregnancy guaranteed if implanted by certified ET technician.



GCC New Game 5654C

| Sire | CED | BW | WW | YW | Milk | Claw | Angle | Marb | REA | \$M | \$W | \$B | \$C |
|------|-----|-----|-----|-----|------|------|-------|------|-----|-----|-----|-----|-----|
| | -1 | 2.8 | 63 | 104 | 8 | .53 | .46 | .36 | .44 | -5 | 30 | 143 | 180 |
| | 95% | 85% | 60% | 70% | 95% | 65% | 40% | 75% | 75% | 95% | 95% | 55% | 95% |
| Dam | CED | BW | WW | YW | Milk | Claw | Angle | Marb | REA | \$M | \$W | \$B | \$C |
| | 1 | 4.3 | 51 | 95 | 19 | .52 | .49 | .83 | .25 | 25 | 33 | 135 | 200 |
| | 85% | 95% | 75% | 70% | 90% | 60% | 50% | 25% | 90% | 95% | 95% | 55% | 85% |

3 CONVENTIONAL EMBRYOS

Consigned by Bapst Cattle

A combination of one of the most intriguing young sires in the breed and a proven donor from the Valley Oaks program. Main Street sired the \$40,000 GA Lady 076-4119 and the \$120,000 high selling female in the Gutwein Angus Inaugural Female Sale, GA Lady 076-4116, in the Recent 2025 Bases Loaded Sale in Denver and is sure to inject plenty of marbling with his solid EPD package.

The combination of Main Street and this ultra balanced Tex Playbook x Consensus daughter will surely produce highly salable bulls and versatile females for the future.

Package of 3 Unsexed Conventional embryos, one pregnancy guaranteed if implanted by certified ET technician.

V A R Main Street 1083
+*19976676

*G A R Home Town
+*Wilks Blackcap 6075

Valley Oaks Rita 8130
+*19295220

+*TEX Playbook 5437
+*VO Miss Rita 4025

+*G A R Ashland
+*Chair Rock Sure Fire 6095
+*V A R Discovery 2240
+*Wilks Blackcap 3T05
+*Basin Payweight 1682
+*Rita 1C43 of 9M26 Complete
+*Connealy Consensus 7229
+*G A R Objective N529

| Sire | CED | BW | WW | YW | Milk | Claw | Angle | Marb | REA | \$M | \$W | \$B | \$C |
|------|-----|-----|-----|-----|------|------|-------|------|-----|-----|-----|-----|-----|
| | 12 | .3 | 71 | 120 | 25 | .56 | .42 | 1.93 | .97 | 71 | 71 | 226 | 364 |
| | 15% | 30% | 35% | 45% | 55% | 80% | 20% | 1% | 15% | 30% | 25% | 2% | 2% |
| Dam | CED | BW | WW | YW | Milk | Claw | Angle | Marb | REA | \$M | \$W | \$B | \$C |
| | 8 | 1.9 | 64 | 106 | 31 | .51 | .48 | .76 | .20 | 81 | 71 | 130 | 250 |
| | 30% | 65% | 40% | 50% | 20% | 55% | 45% | 30% | 90% | 10% | 15% | 60% | 40% |



V A R Main Street 1083



PARADISE ERICA 217



24+A

PARADISE RAWHIDE 506



BD: 1/24/22 Cow 20542836 Tattoo: P217

SydGen Enhance #18170041
Paradise Erica 739 19107706

#*SydGen Exceed 3223
SydGen Rita 2618
#*Barstow Cash
Paradise Erica 433

#*SydGen Googol
#*SydGen Forever Lady 1255
#*SydGen Liberty GA 8627
#Fox Run Rita 9308
#*Sitz Dash 10277
Barstow Queen W16
#SAV Pioneer 7301
Paradise Erica 130

| CED | BW | WW | YW | Milk | DOC | SC | HP | Claw | Angle |
|-----|-----|-----|-----|------|-----|------|-----|------|-------|
| 4 | 2.2 | 73 | 142 | 27 | 28 | 1.57 | 12 | 0.46 | 0.6 |
| 65% | 70% | 20% | 10% | 45% | 10% | 10% | 50% | 30% | 95% |

| CW | Marb | REA | Fat | \$M | \$W | \$B | \$C |
|-----|------|------|--------|-----|-----|-----|-----|
| 68 | 0.78 | 1.02 | -0.005 | 48 | 61 | 182 | 284 |
| 10% | 30% | 10% | 30% | 80% | 40% | 10% | 15% |

Consigned by Paradise Cattle Company

Paradise Erica 217 is a young cow that can be a great addition to any herd. She is the type of female that can be bred to any type of bull. SydGen Enhance is my to go to bull when I'm not sure who I want to breed to because of the excellent females he throughs. Her 2024 bull calf is selling as Lot 11, so you can see what she has produced. She sells with a January bull calf by Poss Rawhide with a birthweight of 90 lb.

- Cow is calfhood Vaccinated
- Herd Certified & Accredited and John's Level 4 Negative

GAHLER ERICA 6201

BD: 9/14/22 Cow *20581731 Tattoo: 6201

25

PVF Blacklist 7077 #18944889
Gahler Erica 1601 18786806

#*PVF Insight 0129
#*PVF Blackbird 3070
Gahler Classic 9470
BRAE Eleanor

#*SAV Brilliance 8077
#*PVF Missie 790
#Dameron First Class
ALL PVF Blackbird 645
BC Classic 385-7
Majors Patsy 122S
#Connealy Full Proof 682E
Way View Erica 696-9140

| CED | BW | WW | YW | Milk | DOC | SC | HP | Claw | Angle |
|-----|-----|-----|-----|------|-----|------|------|------|-------|
| 7 | 2 | 64 | 101 | 23 | 8 | 0.75 | 11.3 | 0.59 | 0.54 |
| 45% | 70% | 55% | 75% | 70% | 95% | 60% | 60% | 85% | 80% |

| CW | Marb | REA | Fat | \$M | \$W | \$B | \$C |
|-----|------|------|-------|-----|-----|-----|-----|
| 55 | 0.32 | 0.77 | 0.027 | 51 | 60 | 142 | 235 |
| 50% | 90% | 45% | 65% | 80% | 50% | 65% | 75% |

Consigned by Gahler Farms

This 2-year-old fall bred female is one of our favorites from the Way-View Erica cow family that has done wonders in our herd and is a maternal sib to Lot 39 and the dam of lot 25A in this sale if you want to take home the pair! "Cleo," as the kids call her, brought home multiple calf champion banners for my daughter in 2023, and the pair left their mark on the showmanship ring several times as well. She bred back early and first cycle, as all these Erica females usually do.

- Safe in calf to Baldrige Heat Seeker, due August 22.

GAHLER ERICA 2401

BD: 10/15/24 Cow 21150405 Tattoo: 2401

25A

MGR Treasure #18156972
Gahler Erica 6201 *20581731

#*VAR Discovery 2240
#*SJH Impression of 6108 1614
#*PVF Blacklist 7077
Gahler Erica 1601

#*AAR Ten X 7008 SA
#*Deer Valley Rita 0308
#*Connealy Impression
DRMCTR 111 Rita 6108
#*PVF Insight 0129
#*PVF Blackbird 3070
Gahler Classic 9470
BRAE Eleanor

| CED | BW | WW | YW | Milk | DOC | SC | HP | Claw | Angle |
|------|-----|------|-------|------|------|------|--------|------|-------|
| 1+10 | 1+6 | 1+68 | 1+119 | 1+21 | 1+15 | 1+92 | 1+11.3 | 1+59 | 1+50 |
| 20% | 35% | 45% | 45% | 85% | 70% | 50% | 60% | 85% | 65% |

| CW | Marb | REA | Fat | \$M | \$W | \$B | \$C |
|------|------|------|-------|-----|-----|-----|-----|
| 1+43 | 1+92 | 1+40 | 1+041 | 61 | 63 | 146 | 250 |
| 80% | 35% | 85% | 80% | 60% | 45% | 60% | 60% |

Consigned by Gahler Farms

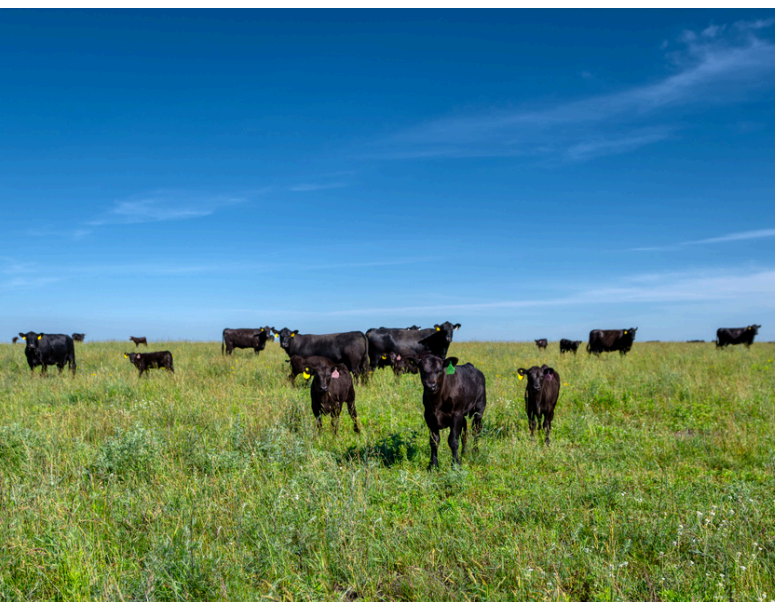
Despite being the youngest heifer in our fall calf crop, her ratios will be near the top of the herd, and she is easy on the eyes! Her dam, Erica 6201, also featured in this sale as lot 25, is just a 2-year-old but is from a solid cow family that stems from the Way-View Angus program with a pedigree full of performance and phenotype bulls. Sired by Treasure, this calf has a nicely balanced EPD profile with the carcass numbers to meet the CAB targeting the brand endorsement. Super disposition!



15

SUPER STAR SALE

T
H
E
F
E
M
A
L
E
S



26 HFS BLACKBIRD 354

BD: 5/15/23 Cow *20827600

Tattoo: 354



HFS Insight 093
*20248934

##*PVF Insight 0129

+*Dameron C-5 Cheyenne 5197

HFS Blackbird 131
*20223842

+*Conley Express 7211

+*Dameron Blackbird 6735

##*SAV Brilliance 8077

+*PVF Missie 790

+*Dameron First Impression
Covells Cheyenne 0523

*Sma Watchout 482

+*DPL Sandy 3040

+*EXAR Classen 1422B

+*Dameron Blackbird 1702

| CED | BW | WW | YW | Milk | DOC | SC | HP | Claw | Angle |
|-----|------|------|-------|------|-----|------|-----|------|-------|
| 1 | 4.3 | 81 | 136 | 18 | 29 | 0.25 | 7.5 | 0.45 | 0.49 |
| 90% | 95% | 15% | 20% | 95% | 10% | 85% | 90% | 30% | 60% |
| CW | Marb | REA | Fat | \$M | \$W | \$B | \$C | | |
| 54 | 0.36 | 0.63 | 0.015 | 39 | 56 | 141 | 222 | | |
| 55% | 90% | 60% | 50% | 95% | 60% | 65% | 85% | | |

Consigned by HFS Angus

Champions are written all throughout this elegant bred heifers pedigree to raise something sure to land at the backdrop.

- Bred Musgrave 316 Exclusive, sexed heifer.
- Top 15% WW
- Top 20% YW



27 GAHLER PATSY 9349

BD: 10/2/23

Bull 20908069

Tattoo: 9349

Connealy Emerald
19257149

##*Connealy Confidence Plus

Jace of Conanga 6571

Gahler Patsy 3508
*18666357

##*Connealy Uptown 098E

Majors Patsy 122S

##*Connealy Confidence 0100
Elbanna of Conanga 1209

##*Connealy Armory
+Jazzy of Conanga 4660 860C

##*Sitz Upward 307R

+*Jace of Conanga 4660 818N

##*P V F New Horizon 001

+V T R R Scotch Cap 9440 V11

| CED | BW | WW | YW | Milk | DOC | SC | HP | Claw | Angle |
|------|-------|-------|--------|------|------|-------|--------|-------|-------|
| 1+7 | 1+0 | 1+68 | 1+126 | 1+28 | 1+23 | 1+.39 | 1+14.6 | 1+.46 | 1+.50 |
| 45% | 25% | 45% | 35% | 35% | 35% | 80% | 25% | 35% | 65% |
| CW | Marb | REA | Fat | \$M | \$W | \$B | \$C | | |
| 1+44 | 1+.66 | 1+.82 | 1+.002 | 70 | 68 | 146 | 259 | | |
| 75% | 60% | 40% | 35% | 35% | 30% | 60% | 50% | | |

Consigned by Gahler Farms

This bred heifer's dam was the \$3,000 half interest selection out of this sale in 2017 by the Dragonic family/Paint Creek Cattle, and we are proud to continue offering progeny that perform, produce, and generate a profit with this amazing cow family! 9349's dam is an ET daughter of our all time greatest donor Major's Patsy 122S, and is now herself our #1 donor. Little kid broke and donor potential. Mating flexibility is endless with this cow family, whether you want performance or show ring style. We chose Baldridge Heat Seeker for her first calf, which is confirmed due September 9, 2025.

28 HFS RITA 411

BD: 1/1/24

Cow *21139133

Tattoo: 411



Tehama Tahoe B767
##*17817177

*Tehama Upward Y238

+*Tehama Mary Blackbird Y684

Deer Valley Rita 8130
*19180639

##*S Whitlock 179

+*Deer Valley Rita 4166

##*Sitz Upward 307R

Tehama Elite Blackbird T735

##*SAV Final Answer 0035

Tehama Mary Blackbird T073

##*S Chisum 6175

##*S Pride Anna 709

##*Plattmere Weigh Up K360

+*Deer Valley Rita 1126

| CED | BW | WW | YW | Milk | DOC | SC | HP | Claw | Angle |
|-----|------|------|-------|------|-----|------|------|------|-------|
| 2 | 3.6 | 85 | 142 | 27 | 26 | 0.54 | 11.4 | 0.66 | 0.64 |
| 85% | 95% | 10% | 15% | 40% | 20% | 75% | 60% | 95% | 95% |
| CW | Marb | REA | Fat | \$M | \$W | \$B | \$C | | |
| 66 | 0.63 | 0.97 | 0.006 | 66 | 79 | 162 | 276 | | |
| 25% | 65% | 25% | 40% | 45% | 10% | 40% | 35% | | |

Consigned by HFS Angus

Here's an elite daughter out of the past 3 year running top 5 registration bull of the breed, Tehama Tahoe. Her pedigree is loaded to make phenomenal cows and ranks numerically to be high performing future donor in anyone's program.

- Top 10% WW & \$W
- Top 15% YW
- Top 25% CW & REA

29 HFS BARDOT 414

BD: 1/3/24

Cow *21139130

Tattoo: 414



Tehama Tahoe B767
##*17817177

*Tehama Upward Y238

+*Tehama Mary Blackbird Y684

HFS Bardot 903
*19522160

+*EXAR Blue Chip 1877B

Dameron Bardot 080

##*Sitz Upward 307R

Tehama Elite Blackbird T735

##*SAV Final Answer 0035

Tehama Mary Blackbird T073

*Dameron First Class

Greens Princess 1012

##*SAV Brilliance 8077

Dameron Bardot 8411

| CED | BW | WW | YW | Milk | DOC | SC | HP | Claw | Angle |
|-----|------|------|------|------|-----|------|------|------|-------|
| 6 | 2 | 79 | 122 | 24 | 13 | 1.02 | 17.8 | 0.52 | 0.47 |
| 55% | 70% | 20% | 40% | 65% | 80% | 40% | 10% | 60% | 50% |
| CW | Marb | REA | Fat | \$M | \$W | \$B | \$C | | |
| 42 | 0.61 | 0.58 | 0.01 | 76 | 76 | 120 | 232 | | |
| 80% | 65% | 70% | 45% | 20% | 15% | 90% | 75% | | |

Consigned by HFS Angus

Stemming from one of the best donors to walk at HFS Angus, Dameron Bardot 080, 414 combines a balanced set of traits along with a true female maker on the top side to remain functional and a phenotypic standout in the herd for generations.

- Top 10% HP
- Top 15% \$W

AF BARBARA 4002

| BD: 1/6/24 | Cow *21027012 | Tattoo: 4002 | ANGUS 30 |
|--------------------------------------|--|---|----------|
| Myers Fair-N-Square M39 *19418329 | #*Woodhill Blueprint Myers Miss Beauty M136 | #*Connealy Confidence Plus *Woodhill Evergreen Z291-B233 #Connealy Thunder #Myers Miss Beauty M476 | |
| AF Barbara 8059 19261036 | AF Black Granite 6039 AF Barbara 6031 | #*Connealy Black Granite Maplecrest Rtia 01158 AF Confidence 4020 AF Barbara 4013 | |

| CED | BW | WW | YW | Milk | DOC | SC | HP | Claw | Angle |
|-----|-----|-----|-----|------|-----|-------|------|------|-------|
| 7 | 0.4 | 69 | 118 | 27 | 19 | -0.42 | 12.6 | 0.55 | 0.53 |
| 45% | 30% | 40% | 50% | 40% | 55% | 95% | 50% | 75% | 80% |

| CW | Marb | REA | Fat | \$M | \$W | \$B | \$C |
|-----|------|------|-------|-----|-----|-----|-----|
| 51 | 0.71 | 0.95 | 0.017 | 69 | 73 | 157 | 273 |
| 60% | 55% | 25% | 55% | 40% | 20% | 45% | 40% |

Consigned by Atterholt Farms

A deep bodied, good footed, very attractive female sired by the popular Meyers Fair-N-Square. The Barbara cow family has been a consistent producer of top replacement females in our herd. If you're looking for easy keeping and longevity, you can't go wrong with this one.

- Calfhood vaccinated
- Sells Open

AF BLACKCAP 4004

| BD: 1/13/24 | Cow 21027013 | Tattoo: 4004 | ANGUS 31 |
|-----------------------------------|--|--|----------|
| Sitz Resilient 10208 *19057457 | #*Sitz Stellar 726D *Sitz Miss Burgess 1856 | #*Mohnen Substantial 272 *SITZ Pride 200B #*Sitz Top Game 561X Sitz Miss Burgess 4381 | |
| Egners Blackcap H765 19934354 | #SydGen Enhance *EXAR Blackcap 6654 | #*SydGen Exceed 3223 SydGen Rita 2618 #*WR Journey-1X74 EXAR Blackcap 2563 | |

| CED | BW | WW | YW | Milk | DOC | SC | HP | Claw | Angle |
|-----|-----|----|-----|------|-----|------|------|------|-------|
| 5 | 1.9 | 91 | 150 | 24 | 12 | 1.54 | 17.2 | 0.56 | 0.36 |
| 60% | 65% | 4% | 10% | 65% | 85% | 15% | 10% | 75% | 10% |

| CW | Marb | REA | Fat | \$M | \$W | \$B | \$C |
|-----|------|------|------|-----|-----|-----|-----|
| 65 | 1.05 | 0.93 | 0.06 | 97 | 91 | 165 | 311 |
| 30% | 25% | 25% | 90% | 2% | 1% | 35% | 15% |

Consigned by Atterholt Farms

Here is a heifer that checks all of the boxes. She is a well-made, very attractive female that is structurally sound on her feed and legs combined with performance and maternal traits.

- Calfhood vaccinated
- Sells Open
- Top 2% \$M
- Top 1% \$W

KINGSWAY MISS MOLLY 704

| BD: 2/5/24 | Cow 21039682 | Tattoo: 704 | ANGUS 32 |
|--------------------------------------|---|---|----------|
| PVF Blacklist 7077 *18944889 | #*PVF Insight 0129 *PVF Blackbird 3070 | #*SAV Brilliance 8077 *PVF Missie 790 *Dameron First Class ALL PVF Blackbird 645 | |
| Kingsway Miss Molly 473 *19376086 | *Silveiras Style 9303 *Kingsway Miss Molly 318 | Gambles Hot Rod Silveiras Elba 2520 Gambles Royal Flush Kingsway Miss Molly159 | |

| CED | BW | WW | YW | Milk | DOC | SC | HP | Claw | Angle |
|-----|-------|------|-------|------|-----|-------|-------|-------|-------|
| 1+2 | 1+4.3 | 1+64 | 1+109 | 1+17 | 1+1 | 1-.16 | 1+6.4 | 1+.57 | 1+.52 |
| 85% | 95% | 55% | 65% | 95% | 95% | 95% | 95% | 80% | 75% |

| CW | Marb | REA | Fat | \$M | \$W | \$B | \$C |
|------|-------|-------|--------|-----|-----|-----|-----|
| 1+49 | 1+.37 | 1+.74 | 1-.003 | 11 | 39 | 155 | 212 |
| 65% | 85% | 50% | 30% | 95% | 95% | 45% | 90% |

Consigned by Kingsway Angus

Blacklist daughters make great females and this heifer comes to you as we have 5 other full sibling in our herd. The Molly 473 cow succeeded her mother and continues to have other successful matings. We like this heifer a lot and you will to. Check her out as she is a standout.



33 RAINS SKYLIGHT RECHBD

BD: 2/24/24 Cow 21040108 Tattoo: R164

Musgrave Redemption
+19543202

#*Casino Bomber N33
Musgrave Barbara 303-947

Rains Skylight Diamond ChBD
20123553

#*Barstow Cash
Rains Skylight Diamond BDTB

#*KM Broken Bow 002
#*Casino Annie K48
#*Musgrave Boulder
MCATL Barbara Lass 947-4216

#*Sitz Dash 10277
Barstow Queen W16
*Bobcat Black Diamond
Rains Skylight Hazel TBFmMd

| CED | BW | WW | YW | Milk | DOC | SC | HP | Claw | Angle |
|-----|------|-----|-----|------|-----|-----|-----|------|-------|
| 8 | 0.1 | 59 | 109 | 22 | | | | | |
| 35% | 25% | 70% | 65% | 75% | | | | | |
| CW | Marb | REA | Fat | \$M | \$W | \$B | \$C | | |
| | | | | 50 | 48 | | | | |
| | | | | 85% | 80% | | | | |

Consigned by Rains Angus

A long bodied, feminine fronted brood cow prospect. This female stems from our Skylight cow family and combines "Redemption", "Barstow Cash", "Black Diamond", and "Thunderbird". Her Granddam and maternal sister are working in our herd.

- Actual birth weight was 72 lb
- OCV, open



34 RAINS EMULOUS GRACIE 3ESH

3/8/24 Cow 21040109 Tattoo: R254

Musgrave 316 Exclusive
#18130471

#*LD Capitalist 316
#Musgrave Prim Lassie 163-386

Rains Emulous Gracie SHTB
19806867

#*Musgrave Sky High 1535
#Rains Emulous Gracie TBPSF

#*Connealy Capitalist 028
LD Dixie Erica 2053
#*Musgrave Foundation
#SCR Prim Lassie 80634

#*Musgrave Big Sky
Flag Queen W 00649
#*SAV Thunderbird 9061
#Rains Emulous Patty PsFSTA

| CED | BW | WW | YW | Milk | DOC | SC | HP | Claw | Angle |
|-----|------|-----|-----|------|-----|-----|-----|------|-------|
| 8 | 0.7 | 56 | 100 | 24 | | | | | |
| 35% | 35% | 80% | 80% | 65% | | | | | |
| CW | Marb | REA | Fat | \$M | \$W | \$B | \$C | | |
| | | | | 72 | 49 | | | | |
| | | | | 30% | 80% | | | | |

Consigned by Rains Angus

An attractive March daughter of "316 Exclusive" who is one of the highest \$B sons of his sire LD Capitalist. Her dam combines Musgrave Sky High and "Thunderbird" in a balanced structurally correct package.

- Actual birth weight was 76 lb
- OCV, open

35 KINGSWAY GEORGINA 710

BD: 3/17/24 Cow 21037696 Tattoo: 710

PVF Blacklist 7077
+18944889

#*PVF Insight 0129
#*PVF Blackbird 3070

Kingsway Georgina 612
20372044

+*S&R Roundtable J328
+*Kingsway Georgina 193

#*SAV Brilliance 8077
+*PVF Missie 790
*Dameron First Class
ALL PVF Blackbird 645
Plainview Lutton E102
PVF Proven Queen 786
#*SAV Bismarck 5682
Kingsway Georgina 74U

| CED | BW | WW | YW | Milk | DOC | SC | HP | Claw | Angle |
|-----|------|-----|-----|------|-----|-----|-----|------|-------|
| 1 | 4.5 | 64 | 109 | 21 | | | | | |
| 90% | 95% | 55% | 65% | 85% | | | | | |
| CW | Marb | REA | Fat | \$M | \$W | \$B | \$C | | |
| | | | | | 42 | | | | |
| | | | | | 90% | | | | |

Consigned by Kingsway Angus

You will like this heifer. She is every bit as powerful as her pedigree and the Georgina cow family. This Blacklist daughter has a fantastic future coming to someone as a show heifer or beautifully made producing cow. Sound and pretty fronted with a great disposition. This a heifer that is a complete package.



36 MAPLECREST RITA 4054

BD: 3/23/24 Cow +*21142731 Tattoo: 4054

BNWZ Dignity 8017
+19379119

#*PVF Insight 0129
+*CCC Sara's Dream 5116

Maplecrest Rita 2026
*17249856

#*Connealy Confidence 0100
Maplecrest Rita M546

#*SAV Brilliance 8077
+*PVF Missie 790
*Dameron First Class
+*Silveiras Saras Dream 1339
Connealy Tobin
Becka Gala of Conanga 8281
#GAR Retail Product
GAR Lucys Boy G158

| CED | BW | WW | YW | Milk | DOC | SC | HP | Claw | Angle |
|-----|------|------|--------|------|-----|------|-----|------|-------|
| -10 | 6.5 | 89 | 144 | 10 | 19 | 0.56 | 8.8 | 0.67 | 0.54 |
| 95% | 95% | 5% | 15% | 95% | 55% | 70% | 85% | 95% | 80% |
| CW | Marb | REA | Fat | \$M | \$W | \$B | \$C | | |
| 66 | 0.15 | 0.63 | -0.008 | 13 | 47 | 146 | 202 | | |
| 25% | 95% | 60% | 25% | 95% | 85% | 60% | 95% | | |

Consigned by Maplecrest Farms

The Rita's have been a staple in the Maplecrest program for decades and the donor dam to this female is one of the most unique Rita's we have had the pleasure of raising. 2026 was a superb blend of performance on paper and elite phenotype. In addition to hanging many banners of her own, maternal sisters to 4054 have claimed Grand or Reserve honors at multiple state and national shows. This March Dignity female is a freak fronted, big barreled, sound structured female that is only going to keep getting better with age!

KINGSWAY MISS MOLLY 722

BD: 3/30/24 Cow 21038373 Tattoo: 722

Lazy JB Ego 1428
+*20149060

+*Lazy JB Edge 8745
#Lazy JB Blackbird Zena 428

Kingsway Miss Molly 558
19992706

+*Colburn Primo 5153
+*Kingsway Miss Molly 473

+*EXAR Classen 1422B
+*DPL Sandy 3040
+*Lazy JB Bacardi 8000
Lazy JB Blackbird 928

+*Dameron First Class
+*Silveiras Saras Dream 1339
+*Silveiras Style 9303
+*Kingsway Miss Molly 318

| CED | BW | WW | YW | Milk | DOC | SC | HP | Claw | Angle |
|-----|-----|-----|-----|------|-----|----|----|------|-------|
| 3 | 3.5 | 61 | 100 | 14 | | | | | |
| 75% | 90% | 65% | 80% | 95% | | | | | |

| CW | Marb | REA | Fat | \$M | \$W | \$B | \$C |
|----|------|-----|-----|-----|-----|-----|-----|
| | | | | 10 | 38 | | |
| | | | | 95% | 95% | | |

Consigned by Kingsway Angus

This youngster has a real WOW factor to her. Her mother is part of the Molly family and both the 473 cow and this heifers mother (known as 558) will be the successors to 318's reign. Perfectly made and correctly patterned, this heifer represents her strong heritage extremely well. The Ego bull brings in calving ease and some added thickness. We liked this heifer so much we repeated the mating for 2025.



SVA ANN 247

BD: 3/31/24 Cow 21022205 Tattoo: 247

SVA Proclamation 208
20946259

+*SVA Acclaim 097
SVA Juanada 050

SVA Ann 030
19114598

#S Whitlock 179
Ann SS C132

#Jindra Acclaim
*SAV Blackcap May 1234
#*Coleman Charlo 0256
+*Champion Hill Juanada 8273

#S Chisum 6175
#S Pride Anna 709
#*CCA Emblazon 702
ANN SS W78

| CED | BW | WW | YW | Milk | DOC | SC | HP | Claw | Angle |
|-----|------|-----|-----|------|-----|------|-----|------|-------|
| 12 | -0.2 | 69 | 126 | 27 | 16 | 0.74 | 9.9 | 0.41 | 0.54 |
| 10% | 20% | 40% | 35% | 40% | 65% | 60% | 75% | 20% | 80% |

| CW | Marb | REA | Fat | \$M | \$W | \$B | \$C |
|-----|------|------|------|-----|-----|-----|-----|
| 66 | 0.29 | 1.05 | 0.02 | 55 | 68 | 151 | 251 |
| 25% | 90% | 15% | 55% | 75% | 30% | 50% | 60% |

Consigned by Scioto Valley Angus

A standout March heifer that brings eye appeal and a balanced, no holes EPD profile together. She has added length and femininity, the kind who will be productive for years. Her productive dam hails from the ANN cow family originating from the Stewart Select Angus program. The granddam of this heifer remains in the herd at 10 years of age. Unlimited mating options with maternal excellence built in.

- Top 10% CED
- Top 15% REA



GAHLER ERICA 6401

BD: 9/15/24 Cow 21164521 Tattoo: 6401

*Conley Express 7211
*Conley Dieckmann Prowess
*19550295 Conley Dieckmann Prowess

Gahler Erica 1601
18786806

Gahler Classic 9470
BRAE Eleanor

*Sma Watchout 482
+*DPL Sandy 3040
Peak Dot Proof 1066X
Lady of Peak Dot 574Z
BC Classic 385-7
Majors Patsy 122S
*Connealy Full Proof 682E
Way View Erica 696-9140

| CED | BW | WW | YW | Milk | DOC | SC | HP | Claw | Angle |
|-----|-------|------|------|------|-----|------|-------|-------|-------|
| 1+0 | 1+2.0 | 1+51 | 1+84 | 1+22 | 1+6 | 1+20 | 1+7.6 | 1+.57 | 1+.50 |
| 90% | 70% | 90% | 95% | 75% | 95% | 90% | 90% | 80% | 65% |

| CW | Marb | REA | Fat | \$M | \$W | \$B | \$C |
|------|-------|-------|--------|-----|-----|-----|-----|
| 1+24 | 1+.43 | 1+.42 | 1+.009 | 38 | 45 | 117 | 190 |
| 95% | 85% | 85% | 45% | 95% | 90% | 90% | 95% |

Consigned by Gahler Farms

A Maternal sib to Erica 6201 who is featured as lot 25 in this sale, 6401 is one of the best from our fall heifer crop. The foundation of these Erica females, Erica 9140 came to us from Way-View Angus and those genetics dominate our herd despite 9140 always being just one spot away from the donor pen. We have kept a ton of females because they flat perform and do it with style! My kids have successfully campaigned multiple heifers from this cow family, all with a quiet disposition and great maternal look with sweet front ends and plenty of body.



UNLOCK YOUR HERD'S GENETIC POTENTIAL

WITH

GMX™

GENEMAX Advantage

A GENOMIC TEST WITH INDIVIDUAL TRAIT REPORTING AND ECONOMIC INDEXES



**GENEMAX ADVANTAGE IS THE ONLY TEST THAT DELIVERS THE ANGUS \$VALUES -
THE GOLD STANDARD IN BEEF CATTLE GENETIC SELECTION.**

SCAN TO LEARN MORE

BEST TEST ON THE MARKET FOR ANGUS-SIRED
FEMALES BROUGHT TO YOU BY AGI® AND ZOETIS



THE BUSINESS BREED.

Invest in your legacy with Ohio Angus.

Learn More &
Become a Member at
www.ohioangus.org



[illegible]

OHIO ANGUS ASSOCIATION

Jacy Bapst, Secretary/Fieldman

2404 Beaver Pike

Waverly, OH 45690

RETURN SERVICES REQUESTED

DATED MATERIAL | DO NOT DELAY

