



# 2026 EXPO SHOW PROGRAM





# IMPORTANT 2026 UPDATES

## Dear Ohio Beef Expo Attendees

The ongoing construction at the Ohio Expo Center will cause some challenges for this year's Ohio Beef Expo, and the Ohio Cattlemen's Association staff and volunteers are doing everything possible to accommodate all exhibitors and attendees. We have met multiple times with the Ohio Expo Center team and believe we have identified solutions that will help keep traffic moving efficiently and maximize the use of the space available.

To help manage congestion and improve move-in efficiency, we are allowing early arrival for this year only. **All trade show exhibitors, sale consignors, and junior show exhibitors may begin moving cattle and/or tack into the fairgrounds starting at 7:30 a.m. on Tuesday, March 17.** We hope this early arrival option will help spread out traffic and ease peak unloading times.

Additionally, upon arrival all trailers will be directed to Hudson Street, exit 112 north of the grounds, turn on Silver Drive to enter Gate 19 near the railroad. Trailers will still be able to enter through the plaza on the east side of 17th Avenue off I-71. (17th Avenue continues to be closed to traffic during construction and cannot be used to enter the grounds from the west side.) Beef Expo staff are planning an enhanced staging area to assist with unloading for sale and junior show trailers, trade show exhibitors and cars along Korbel Avenue before entering the fairgrounds at Gate 10 on 17th Avenue.

Beef Expo staff understand that parking may still be challenging. To help, we will operate golf cart shuttle services from several parking areas north of 17th Avenue, transporting attendees to and from the Expo grounds throughout the event.

### Parking Instructions:

- All Ohio Beef Expo traffic must enter from Hudson Street exit 112, to Silver Drive and access the grounds at Gate 19 OR through the plaza on the east side of 17th Avenue off I-71.
- There will be no entrance off 11th Avenue.
- After unloading, all exhibitor trailers must exit through Gate 9 at 11th Avenue, go west on 11th Avenue, turn right on 4th Street, turn right on Hudson Street to re-enter grounds and park in the designated trailer parking areas.
- All school buses coming on Thursday for the Judging Contest will park in the reserved "sale buyer" parking area north of 17th Avenue.

### Sale Buyers Trailers:

- Enter from Hudson Street exit 112 north of the grounds, to Silver Drive and access the fairgrounds at Gate 19 near the railroad OR through the plaza on the east side of 17th Avenue off I-71.
- There is reserved "sale buyer" trailer parking located in the Korbel camping areas just north of 17th Avenue.
- Expo staff will provide golf cart shuttles from "sale buyer" trailer parking to the sale cattle barn.
- There will be no entrance off 11th Avenue.
- Sale trailers will exit the grounds at Gate 9 on 11th Avenue.

We have worked diligently to design a system that works for everyone during this year's Expo. Please continue to check the OCA Facebook as well as Ohio Beef Expo website for updates regarding traffic. Thank you for your understanding and continued support of the Ohio Beef Expo.

**605**  
SIRES + DONORS

605.925.7473 | [info@605sires.com](mailto:info@605sires.com)  
27666 443rd Avenue, Marion, SD 57043  
Monday-Friday: 8:00 a.m.-5:00 p.m.

**605SIRES.COM**



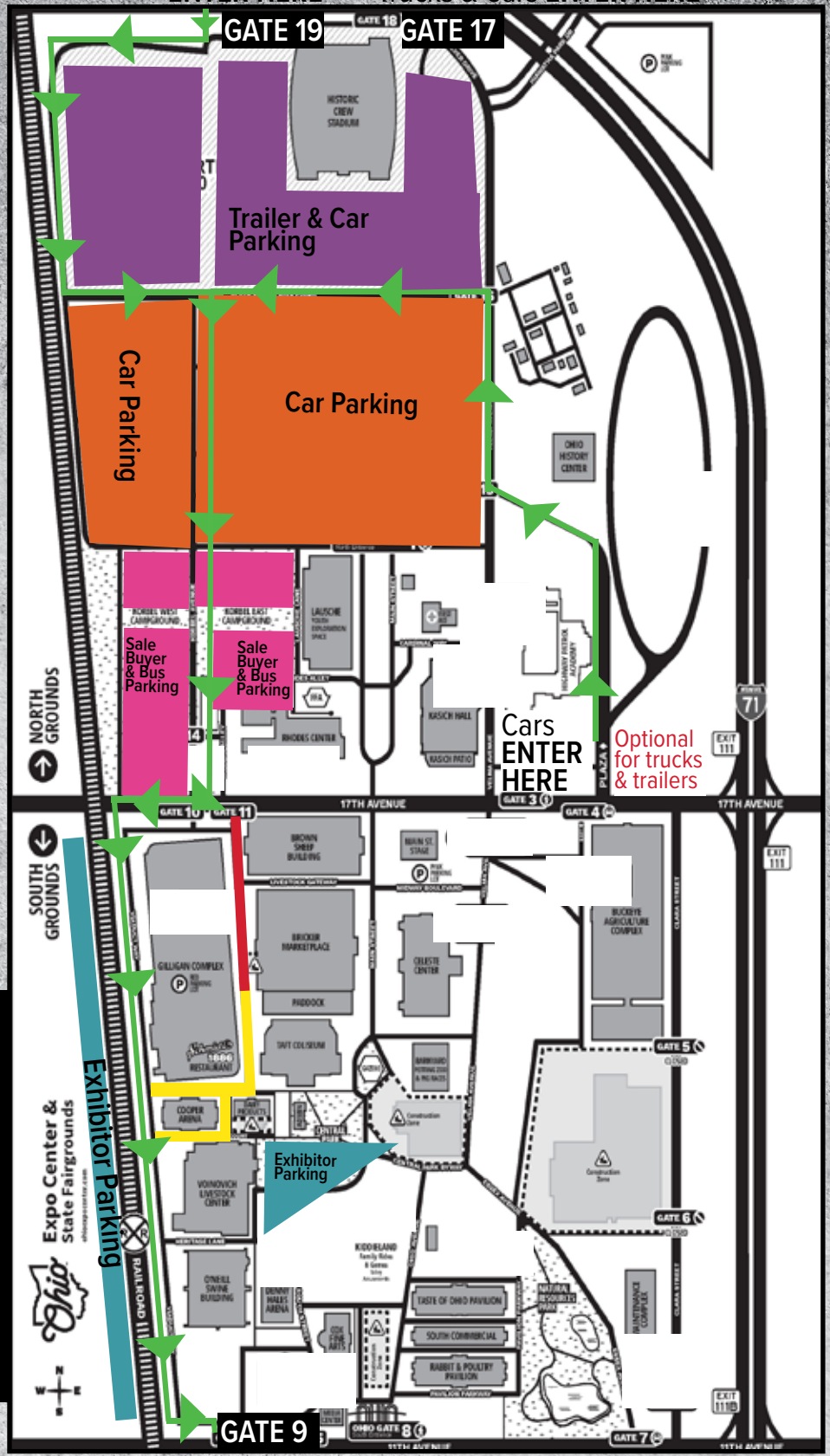
# EXPO MAP

Please see gates to enter and exit the fairgrounds, traffic patterns, designated trailer and car parking areas, etc.

No vehicle traffic is allowed on the east side of Gilligan between the Gilligan Building, Coliseum, Cooper Arena, and the Voinovich Center. This area will be designated for pedestrian use only to ensure safe and efficient movement throughout the construction.

**TAKE EXIT 112 AT HUDSON ST TO SILVER DRIVE TO GATE 19**

- Flow of ALL traffic, heading SOUTH ONLY
- Trailer & Car Parking
- Car Parking
- Walking Areas
- Exhibitor Parking
- Sale Buyer Trailer Parking
- No Traffic Areas



**Trailer & Cars EXIT HERE**

**NO ENTRANCE OFF 11TH AVENUE WILL BE PERMITTED**



# 2026 SCHEDULE

March 19 - 22, 2026  
Ohio Expo Center | Columbus

## Ohio Cattlemen's Association

10600 US HWY 42  
Marysville, OH 43040  
(614) 873-6736  
cattle@ohiocattle.org



## Official Hotel

Hilton Columbus Polaris  
8700 Lyra Drive  
Columbus, OH 43240  
(614) 885-1600

## Official Website

ohiobeefexpo.com

## TUESDAY, MARCH 17

\*\*No cattle are permitted on the fairgrounds before 7:30 a.m.\*\*  
All day Early Move-in Opportunity for Trade Show, Breeds, & Junior Show Cattle

## WEDNESDAY, MARCH 18

12 - 5 p.m. Trade Show Large Equipment Move-in  
\*\*Arrival deadline for all breeds selling Friday, March 20

## THURSDAY, MARCH 19

8 a.m. - 9 a.m. Judging Contest Check-in & Packet Pick-up, Coliseum  
8 a.m. - 12 p.m. Trade Show set up  
9 a.m. Breeds Check-in Begins, Breeds Building  
10 a.m. Judging Contest Begins, Coliseum  
10 a.m. Arrival deadline for all breeds selling Saturday, March 21 and others  
12 - 6 p.m. Trade Show Open, Voinovich Building  
2 p.m. First Defense - Cattlemen's Learning Center, Voinovich  
2:30 p.m. Judging Contest Awards, Coliseum  
4 - 8 p.m. Junior Show Check-in, Gilligan Complex  
5:30 p.m. The Social, Ohio Expo Center

## FRIDAY, MARCH 20

8 - 11 a.m. Junior Show Check-in, Gilligan Complex  
8:30 a.m. - 6 p.m. Trade Show Open, Voinovich Building  
9 a.m. Mini Hereford Show, Cooper Arena  
9:30 a.m. Youth Beef Quality Assurance, Coliseum  
10 a.m. LiveAg Online Feeder Cattle Sale, Sponsored by United Producers, Inc., Voinovich Building  
10 a.m. - 5 p.m. Genetic Pathway Open, Breeds Building  
11 a.m. Junior Showmanship, Coliseum - 2 rings  
11:30 a.m. Shorthorn Parade, Cooper Arena  
12:30 p.m. Hereford Parade, Cooper Arena  
1 p.m. Murray Grey Show, Breeds Building  
2 p.m. Angus Parade, Cooper Arena  
4 p.m. Aberdeen Angus Sale, Voinovich Building  
4:30 - 5:30 p.m. Cowboy Happy Hour, Voinovich Building  
5 p.m. Shorthorn Sale, Voinovich Building  
5 - 6 p.m. Junior Show Check-in, Gilligan Complex

## SATURDAY, MARCH 21

8 a.m. - 5 p.m. Junior Market Animal & BBS Show, Coliseum  
8:30 a.m. - 6 p.m. Trade Show Open, Voinovich Building  
9 a.m. Mini Herefords Sale, Voinovich Building  
10 a.m. Hereford Sale, Voinovich Building  
10 - 11 a.m. Junior Show Check-in, (Heifers Only), Gilligan Complex  
10 a.m. - 5 p.m. Genetic Pathway Open, Breeds Building  
11:30 a.m. Simmental Sale, Voinovich Building  
2 p.m. Angus Sale, Voinovich Building  
3:30 p.m. Maine Anjou Sale, Voinovich Building  
4 - 5 p.m. Cowboy Happy Hour, Voinovich Building  
6 p.m. deadline Junior Show Check-in for Expo Sale Heifers, Gilligan Complex

## SUNDAY, MARCH 22

8 a.m. - 5 p.m. Junior Heifer Show & BBS Show, Coliseum  
8:30 a.m. - 1 p.m. Trade Show Open, Voinovich Building



**NEW WORLD ORDER**



**PROBLEM SOLVED**



**CHASING GREATNESS**



**PERFECT STORM**



**TURNING POINT**



**LOVE THY NEIGHBOR**

**LAUTNER**  
MATT LAUTNER CATTLE

MATT, MICHELLE, MATILYN, MICHAEL, + MAX LAUTNER  
32061 OLD PORTLAND ROAD ADEL, IOWA 50003  
MATT LAUTNER: 515.450.2800 OFFICE: 515.391.9540  
WWW.MATTLAUTNERCATTLE.COM



SCAN TO  
VIEW OUR  
2026 SIRE  
DIRECTORY



# Kastel Show Cattle & Friends Sale



**LARGEST  
LIVE CLUB  
CALF SALE  
OF THE YEAR!!**



Josh Kastel

Sunday Oct. 4th  
@ 2 pm Hudson, MI

Josh Kastel (419) 344-3476





# EVENTS & PROGRAMS

## COWBOY HAPPY HOUR

OCA will be hosting a happy hour on Friday and Saturday, March 20 and 21. On Friday, the happy hour will be 4:30 - 5:30 p.m. and Saturday 4 - 5 p.m. The happy hours on both days will take place at the OCA booth in the Ohio Beef Expo Trade Show and will be a social event you won't want to miss.

OCA members will be treated to complimentary snacks and drinks during the Cowboy Happy Hour. Stop by the OCA membership booth for a wristband to gain access to the Happy Hour area.

## JUDGING CONTEST - REGISTER BY MARCH 5

The Ohio Beef Expo Judging Contest is Thursday, March 19 in the Coliseum. No in-person registration or payment will be accepted. All registration must be completed prior to the event. Early registration deadline is **Thursday, March 5, 2026** at \$10 per participant or \$40 per team. The LATE registration deadline is **March 15, 2026** at \$15 per participant or \$60 per team. ALL individuals and teams participating in the judging contest at the Ohio Beef Expo will sign up online at [ohiobeefexpo.com](http://ohiobeefexpo.com). Contestant check-in on March 19 will be held from 8-9 a.m.

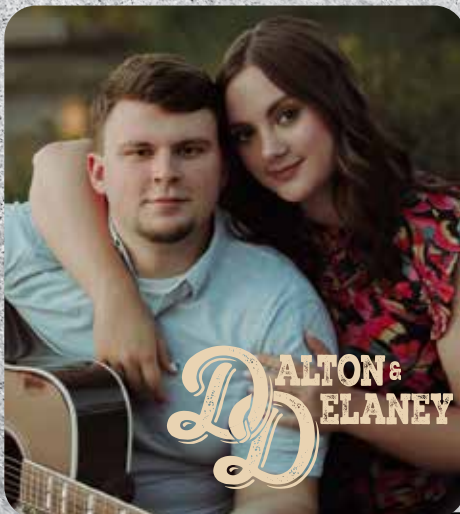
Teams will consist of three or four people. The individuals do not need to be from the same county or chapter. **NEW** this year there will be a drop score and only the three highest scores will count for team placings. Four divisions will be offered for individuals based on Jan. 1: Beginner (8-10), Junior (11-13), Intermediate (14-16), and Senior (17-21). Two divisions will be offered for teams Junior teams (8-13) and Senior teams (14-21 as of Jan. 1). Six classes of cattle will be evaluated and one or more classes will include questions and the use of performance data.

**Parking for buses bringing judging contest participants will be available in the Korbel West Campground just north of 17th Avenue.** Awards will be presented to the top 10 individuals in four divisions and top 5 teams in two divisions. This recognition will be held in the Taft Coliseum at approximately 2:30 p.m.

## THE SOCIAL FEATURING DALTON & DELANEY

OCA invites you to join in an evening of networking with fellow cattlemen and industry leaders at The Social, on Thursday, March 19, 5:30 p.m. **moved to the Ohio Beef Expo Trade Show this year.** The Social is open to OCA membership, Expo cattle and trade show exhibitors and volunteers. It's free to attend and will include appetizers and drinks.

Also, the evening will feature a live auction with proceeds going toward OCA's Political Action Committee (PAC) fund to support ag-friendly candidates in the next election.



Dalton & Delaney, an acoustic duo from Ohio, met in October of 2022 in the National FFA Talent Program. They realized they both shared a love for music and decided to start their own duo. Dalton and Delaney are no strangers to the agriculture industry as they both grew up heavily involved in 4-H and FFA.

# CAPTURING *moments* THAT MATTER

*Linde's*  
livestock photos

Find your photos at [lindesphotos.com](http://lindesphotos.com)



From **BREEDING**  
to **CALVING** to **WEANING**  
& Everything in-between

**pbsanimalhealth**<sup>™</sup>

is your one-stop shop when it comes to the  
**Success of Your Herd**

Booths  
151-153



Serving cattlemen nationwide for 85 years!  
*Ohio owned and operated since 1941*

**Stop & Shop our Walk-In Retail Store** at the Ohio Beef Expo, March 19-22, 2026

## TAKE ADVANTAGE OF SHOW SPECIALS!

- **Spend \$495 and get \$50 off**
- **Spend \$250 and get \$20 off**
- **Specials, promotions & GIVE-AWAYS!**
- **DEWORMER DEALS**  
*Plus, NO shipping or hazardous charges!*
- **Lice Control Solutions**
- **Visit with manufacturer representatives**  
from Durvet, ImmuCell and Huvepharma


Can't wait  
to see you at  
**OHIO  
BEEF  
EXPO**

## Trade Show Hours

Thursday, 3/19/26	12pm – 6pm
Friday, 3/20/26	8:30am – 6pm
Saturday, 3/21/26	8:30am – 6pm
Sunday, 3/22/26	8:30am – 1pm

**pbsanimalhealth.com**

800-321-0235

Visit one of our   
5 Ohio Retail Stores:  
Circleville | Massillon  
St. Henry | Wilmington | Wooster

Live Chat

Now  
Available  
Online!



OBE26



# EVENTS & PROGRAMS

## OFFICIAL BEEF EXPO HOTEL

Hilton Columbus Polaris is the official hotel for the 2026 Ohio Beef Expo

Hilton Columbus Polaris  
8700 Lyra Drive.  
Columbus, OH 43240  
(614) 885-1600

## EVENT LOCATION

Ohio Expo Center  
717 E. 17th Ave.  
Columbus, OH 43211

## EVENT PHONE NUMBER

(614) 412-9565

*Thank You!*  
**OHIO BEEF EXPO  
VOLUNTEERS**

## YOUTH BEEF QUALITY ASSURANCE

Youth Beef Quality Assurance training will be offered on **Friday, March 20, at 9:30 a.m. in the Coliseum**. Three age divisions for BQA will be available: 8 - 11, 12 - 15 and 16 - 21. BQA training is a requirement for the OCA BEST program. All participants will complete a form following their training that will be returned to the OBC office. County extension offices will be notified of each participant's attendance at the training.

## FEEDER CATTLE SALE

The 2026 Ohio Beef Expo will continue to host a feeder cattle internet board sale, sponsored by United Producers, Inc. (UPI). The sale will be held **Friday, March 20 at 11 a.m. in the Voinovich Building sale ring** on the Ohio Expo Center grounds. UPI will be offering a social event prior to the sale at 10 a.m.

A board sale offers consignments of uniform packages of feeder cattle. The cattle are sold while on the farm with specific pick-up period defined in the sale catalog. Typical pick-up times range from one week to four months after the sale. Lots are typically sold in 48,000 to 50,000 pound load lots. However, smaller groups are encouraged as well. These sales may include all types and breeds of feeder cattle. Uniform lots sold in groups that would average between 400 and 900 pounds are common. Uniform groups of Holstein and beef on dairy feeder cattle may range between 250 pounds to 900 pounds.

Consignments are open to Ohio and out-of-state producers. Earlier consignments are encouraged since videos and pictures of all consignments will be posted on UPI's web page. Sale commission will be divided between the UPI sourcing market and OCA. Sale catalogs will be posted on UPI and OCA's websites at least one week in advance of the sale.

To consign cattle or request information, contact your local United Producers, Inc. representative or Sam Roberts at 937-477-0060.

## EXPO PLANNING COMMITTEE

Shane Riley - Chairman, Joe Foster - Vice Chairman, Lindsey Hall - Co-Chairman, Junior Show, Linde Sutherly - Co-Chairman, Junior Show, Jeff Winkle - Chairman, Breed Shows & Sales, Dave Puthoff - Chairman Trade Show, Mackenzie Barker - Judging Contest, Matthew Chaney - Judging Contest, Seth Ebert - Judging Contest

## TRADE SHOW COMMITTEE

Dave Puthoff - Heartland Feed Services, Chairman, Joe Foster - Quality Liquid Feeds, Vice-Chairman, Patrick Barker - Kent Feeds, Allison Hively - Highland Livestock Supply Ltd., Derek Snider, AgCredit ACA, Ryan Sorensen, United Producers, Inc.

## JUNIOR SHOW COMMITTEE

Lindsey Hall, co-chair, Linde Sutherly, co-chair, Andrew Armstrong, Doug Blay, Alyssa Carter, Amy Johnson, Maidsen Jolliff, Riley Laber, Lori Lawrence, Jaymes Maciejewski, Patsy Miller, Si Pirogowicz, Lindsey Pugh, Becky Reed, Gary Staley

## BREED SHOWS, DISPLAYS, & SALES COMMITTEE

Jeff Winkle - Chairman - Shorthorn, Roger Hunker - Aberdeen Angus, Jacy Bapst-Angus, Kim Allen - Gelbvieh, John Founds - Hereford, Steve Traylor - Highland, Terry Muir - Maine-Anjou, Dan Wiley - Mini Hereford, Sherie Clark - Murray Grey, Ryan LePage - Red Angus, Pam Haley - Simmental

CHAMPIONS ARE MADE LONG BEFORE SHOW DAY.

# ARE YOU READY FOR WHAT'S NEXT?

Banners are built through early decisions that drive results. Trans Ova helps producers turn elite genetics into consistent, reliable outcomes. Preparation today builds success when it counts. Are you ready for what's next?

**TRANS**  **OVA**  
genetics

[WWW.TRANSOVA.COM](http://WWW.TRANSOVA.COM) | 712.722.3586



# SEEDSTOCK SHOWS & SALES

## SALE CATTLE IDENTIFIED BY EID TAGS

All Ohio Beef Expo Sale Cattle will be identified with EID tags to comply with the USDA Animal Disease Traceability (ADT) rule for interstate shipment of cattle. This means that no matter what an individual state's requirements for transporting cattle may be, potential Expo cattle buyers can be assured that they can easily ship their Expo purchases into any state.

## MANDATORY BVD TESTS

All cattle (from Ohio and out-of-state) consigned to breed sales, show cattle, display breeds and Genetic Pathway cattle at the 2026 Ohio Beef Expo must be tested negative for Bovine Viral Diarrhea (BVD) persistent infection (PI) status prior to arrival at the 2026 event. This includes all cattle entered in the Ohio Beef Expo Junior Show. Any animals arriving at the Expo without a negative BVD PI test, will be ineligible to participate in the 2026 Ohio Beef Expo and will be excused from the show grounds. Type of test and negative test results must be listed on the required health certificate and/or laboratory report of negative status provided.

For more information regarding health issues contact the Ohio Beef Expo official veterinarian Dr. Eric Gordon at (937) 642-2936 or see the 2026 Ohio Beef Expo health requirements at [ohiobeefexpo.com](http://ohiobeefexpo.com)

## TRICHOMONIASIS

Ohio has mandatory Trichomoniasis rules for all bulls entering Ohio from any other state. Virgin bulls under 18 months of age on the date of the sale must have a virgin statement on the CVI accompanied by the veterinarian's and owner's signature. Bulls 18 months of age or older on the date of the sale and all non-virgin bulls must have a PCR test within 28 days of the date of the sale.

## TUBERCULOSIS

No TB test is required if cattle originate from a TB free state. Cattle coming from the four counties of Michigan (Alcona, Alpena, Montmorency, and Oscoda) will need a TB test. Contact the Ohio Department of Agriculture 614- 728-6220 for additional direction.

## ADDITIONAL SALE CATTLE HEALTH REQUIREMENTS

Cattle in Ohio Beef Expo sales are sold into many different states and it is important that consignors keep this in mind when planning for the sales.

The lot numbers of the animals that do not meet the Ohio Beef Expo health requirements will be announced prior to each breed sale. Health papers (CVIs) will NOT be issued for cattle that do not meet the Ohio Beef Expo health requirements. These health papers are typically written at the sale's clerking table and accompany the cattle to the new buyer's location.

A list of the lots that do not meet the requirements will be available in the Beef Expo office by Friday, March 20 at 2 p.m.

## BUYER PARKING FRIDAY & SATURDAY MARCH 20-21

Due to construction parking is limited on the fairgrounds. Therefore on **Friday and Saturday, special trailer parking for sale buyers ONLY** will be available in the **Korbel West Campground just north of 17th Avenue**. Golf cart shuttles will be frequently running from the breeds barn to the trailer parking.

All other cattle trailers, including show and sale cattle exhibitor trailers and junior show trailers **MUST** park north of 17th Avenue after unloading.

**There will be no entrance off 11th Avenue.**

## ABERDEEN ANGUS

Representative Roger Hunker  
Sale Manager Roger Hunker  
Auctioneer Darby Walton

## ANGUS

Representative Jacy Bapst  
Sale Manager Jacy Bapst  
Auctioneer Ron Kreis

## GELBIEH

Representative Kim Allen

## HIGHLAND

Representative Steve Traylor  
Display

## HEREFORD

Representative John Founds  
Sale Manager Karen Holley  
Auctioneer Ron Kries

## MAINE-ANJOU

Representative Terry Muir  
Sale Manager Craig Reiter  
Auctioneer Kevin Wendt

## MINIATURE HEREFORD

Representative Dan Wiley  
Sale Manager Roger Hunker  
Auctioneer Darby Walton  
Judge Aaron Arnett

## MURRAY GREY

Representative Sheri Clark  
Judge Luke Vogel

## RED ANGUS

Representative Ryan LePage  
Display

## SHORTHORN

Representative Jeff Winkle  
Sale Manager Jeff Aegerter  
Auctioneer Kevin Wendt

## SIMMENTAL

Representative Pam Haley & Christina Fisher  
Sale Manager Doug & Debbie Parke  
Auctioneer Ron Kreis

# Everything We've Ever Done Comes Back to This.

TO US, IT'S NOT JUST BUSINESS — IT'S PERSONAL.



BALE WRAPPERS



TEDDERS



BALERS



BALE PROCESSORS



MOWERS



RAKES

# D&J

Sales & Service Inc.

Vermeer



740-942-3099

djsalesandservice.com

38175 Cadiz Piedmont Rd., Cadiz, Ohio 43907



# GENETIC PATHWAY

Friday & Saturday, March 20-21

## GENETICS ON DISPLAY

The Genetic Pathway display will once again feature the country's best genetics. Live bulls will be on display between the hours of 10 a.m. to 5 p.m. Friday, March 20 and Saturday, March 21. The Genetic Pathway area is housed in the Breeds Barn.

Additionally the country's top semen companies will be in the Genetic Pathway area to talk to you about ordering semen for your spring breeding needs.

The Genetic Pathway office will be located in the breeds office where the cattle are stalled. For questions or for maps, stop by the office and ask to see the Genetic Pathway representative.

## GENETIC PATHWAY EXHIBITORS

- 605 Sires
- Blind Badger Ranch
- Boviteq
- Boyert Show Cattle
- Breeders World/ Phantom Halters
- CMCA Show Cattle
- Competitive Edge Genetics
- Cunningham Family Farm
- Griswold Cattle
- JS Simmental
- Kastel Show Cattle
- Lautner Farms
- Matt Lautner Cattle
- Midwest Genetics
- Minnaert Cattle Genetics
- RL Genetics
- Rodgers Cattle Company
- ShowTime Cattle Company & ShowTime Premium Feeds
- State Line Cryogenics
- THE BULL EXCHANGE
- Tim Schaeffer Show Cattle
- Top Sires
- Trans Ova Genetics
- Vanhove Cattle
- Vytelle
- Walsh cattle
- Winegardner/Klingaman Show Cattle and VanVorhis Show Cattle

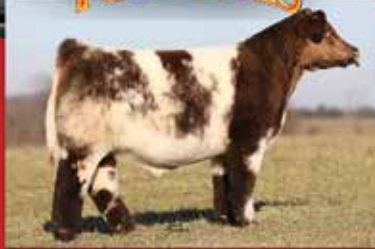
**CONTACT TOP SIRES**  
**at 630-365-6859**  
 TO PLACE YOUR ORDER FOR  
 SPRING BREEDING SEASON

**TOPSIRE.COM**  
**MIKE WEIDNER, 630.365.6859**  
 46W604 LEES RD • MAPLE PARK, IL 60151  
 Email: topsires@aol.com



**24 KARAT**

**ANGUS**



**FSF PERFECTION**

**SHORTHORN**



**SHOWTIME NO LIMIT**

**HEREFORD**



**DATA BANK**

**MAINE-ANJOU**



**CHANGE IS COMING**

**SIMMENTAL**



**IN GOD WE TRUST**

**3-WAY CROSS**

**The Cattlemen's Source** FOR QUALITY+ SEMEN DISTRIBUTION



**YOUR CHECK.  
 YOUR COOPERATIVE.  
 THAT'S PATRONAGE.**

As a farmer-owned lender, we're here to share the success of the cooperative with our customers. Which is why we're proud to return a portion of the cooperative's profits back to our customer-owners in the form of patronage.

In the last nine years, we have returned more than \$1.5 billion to our eligible customer-owners. It's what a farmer-owned lender does.



**LEARN MORE AT [FCMA.COM/PATRONAGE](http://FCMA.COM/PATRONAGE)**

Patronage is an annual decision made by the Board of Directors to return earnings to eligible customers. For more information about patronage or patronage eligibility, visit [fcma.com/patronage](http://fcma.com/patronage).



# TRADE SHOW

Thursday | 12 - 6 p.m.

Friday | 8:30 a.m. - 6 p.m.

Saturday | 8:30 a.m. - 6 p.m.

Sunday | 8:30 a.m. - 1 p.m.

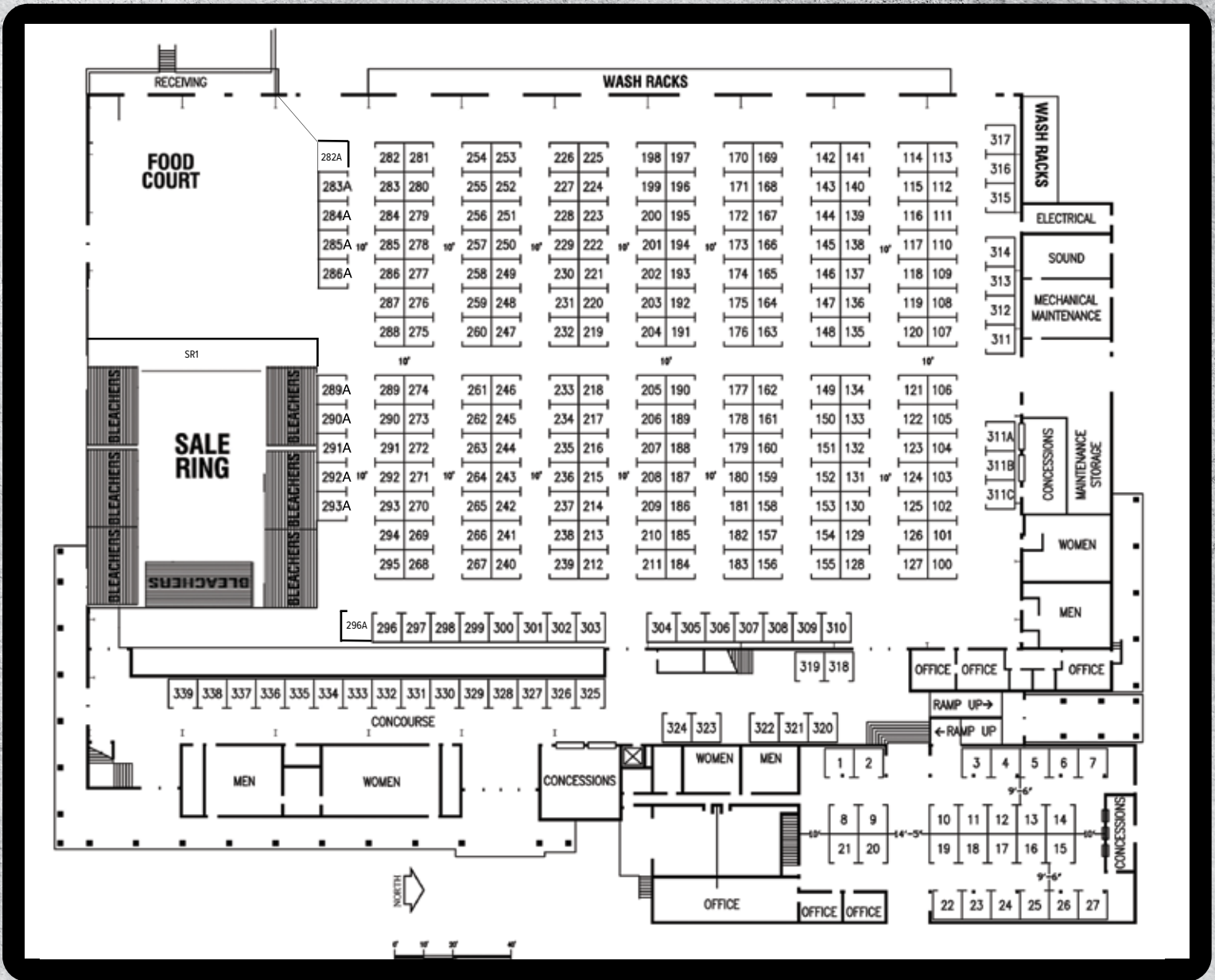
ABS Global, Inc.....	295A
Advanced Ag Products, LLC.....	292
*Ag Credit.....	127
Ag Net Communications.....	
Ohio's Country Journal/ Ohio Ag Net.....	239
*Ag-Pro.....	196 - 199
All Aluminum Show Equipment.....	249 - 253
Back Forty Embroidery.....	325 - 328
Back in the Barn Boutique.....	22-23
Bane-Welker Equipment.....	OUTSIDE
Benchmark Graphic Co.....	207,216
Biozyme Inc.....	304
Boehringer Ingelheim.....	131
*Born Partners LLC.....	265-267
Bowman Caramel Apples.....	311A
Broken Arrow Woodworking.....	307-308
Cattle Visions, LLC.....	101 - 102
Cheap & Chic Boutique.....	25 - 27
Circle L Fence.....	215
City Limits Western LLC.....	3-4, 11 - 12, 17 - 18
CJ Brown Studios.....	132 - 134
*Corteva Agriscience: Range & Pasture.....	206
Countyline Trends Boutique.....	332-333
Cow Hen Sow.....	319
Cowco, Inc.....	221 - 222, 229 - 232

Custom Hay Feeders.....	226
*D & J Sales & Service Inc.....	296 - 299
*DHI Cooperative Inc.....	188
*Elanco Animal Health.....	187
Elgin Service Center-K Buildings.....	273 - 274
Engelhaupt Embroidery llc.....	289 - 291
Farm and Dairy Newspaper.....	271
*Farm Credit Mid-America.....	310
Farm Girl Factory.....	10
Farmhouse Bling.....	334 - 335
Fennig Equipment.....	112 - 113
FERA Diagnostics and Biologicals.....	272
Foltz Ag Enterprises inc.....	223 - 225, 227-228
Fowler Seed Marketing.....	294
GENEX.....	289A
Harold's Equipment.....	219
Harrison Trailers LLC.....	OUTSIDE
Heat Freedom LLC / Crown Royal Stoves.....	311C
*Heritage Cooperative, Inc.....	244 - 246, 261 - 263
*Highland Livestock Supply Ltd.....	137 - 146, 167 - 170
Hill's Supply.....	220
Horse Creek Outfitters.....	323 - 324
*Hubbard Feeds.....	240 - 241
*ICAP Crop Insurance/ Maplecrest Farms LLC.....	295
Indian Creek Beads.....	24
Insulights.com, Inc.....	200
*J Star Equipment.....	192 - 195, 201 - 203
*Kalmbach Feeds.....	259 - 260
*Kent Nutrition Group.....	268 - 269
Kurtz Boots.....	8 - 9, 20 - 21
Lance's Trailer Sales.....	311B
Leonard Truck & Trailer.....	254-257
Lewis Cattle Oilers.....	248
McBurney Livestock Equipment.....	301 - 302
MEMES INC.....	336 - 339
*Merck Animal Health/Allflex.....	128, 155
*MH EBY INC.....	279 - 284
*Murphy Tractor.....	217 - 218, 233 - 234
*Ohio Angus Association.....	285A
Ohio Beef Council.....	191, 204
*Ohio CAT.....	135 - 136, 147 - 148
Ohio Cattlemen's Association.....	159 - 162, 177 - 180
Ohio CattleWomen.....	149-150
Ohio Department of Agriculture.....	264
Ohio Farm Bureau.....	300
Ohio Shorthorn Breeders Assn.....	286A
OSU CFAES, Extension & FSR.....	309
Paint Valley Farms.....	290A - 291A
Pasture Management.....	242 - 243
*Patriot Truck & Trailer Solutions.....	275 - 278, 285 - 288
*PBS Animal Health.....	151 - 154
Possum Products, LLC Handmade Toys.....	318
Possum Run Ranch Wear.....	13 - 16
*Priefert Ranch Equipment.....	163 - 166, 173 - 176
*Purina Animal Nutrition.....	157 - 158, 181 - 182
*QLF - Quality Liquid Feeds.....	205

Red Barn Creations 605 ..... 320-322  
 \*Reed & Baur Insurance Agency ..... 189  
 Reinecker Ag, LLC ..... 247  
 \*Richfield Industries ..... 118 - 119  
 Riverwind Barn Cameras..... 190  
 \*Rodoc Leasing and Sales / Midway Trailer Sales ..... SR1  
 S & B Custom Innovation/ Herd Pro ..... 235 - 238  
 \*Saltwell Western Store ..... 311 - 317, 108 - 111  
 \*Select Sires Member Cooperative ..... 156, 183  
 Showcoat Solutions LLC ..... 125  
 Starred Leather & Co..... 1-2  
 \*STgenetics..... 303  
 \*Straight A's Arena Inc ..... 184 - 186, 208 - 214  
 Style & Grace Boutique ..... 5-7  
 Sullivan Supply Inc..... 103 - 107, 120 - 124

Tag 19 Boutique..... 329-330  
 Tangent Square ..... 19  
 \*Umberger Show Feeds..... 305 - 306  
 \*United Producers Inc. .... 292A - 293A  
 Wagner Ins. Agency & Bluebird Meadow Llama Farm..... 331  
 Wahl Clippers..... 126  
 \*Weaver Leather Livestock ..... 129 - 130  
 Wellington Implement..... 270, 293  
 White's Show Supplies..... 114 - 117  
 Whitetail Propertieis Real Estate LLC..... 258  
 \*WM E Fagaly & Son, Inc. .... 282A - 284A  
 Wolfer Farms Feed & Supplies LLC ..... OUTSIDE  
 WW Livestock System ..... 171 - 172  
 \*Zoetis ..... 100

\* Indicates members of OCA's Allied Industry Council



7AN604 TOP CUT DAUGHTER  
2025 RESERVE PGS FEMALE BRED & OWNED

7AN743 CRAFTSMAN DAUGHTER  
2025 CHAMPION PGS FEMALE

# PHENOTYPE & GENOTYPE SHOW SUCCESS

7AN835  
PVF CAPONE 2104

**CAPONE**  
King Pin x McKinley | 20567999

7SM151  
STCC MANTACHIE 105L

**MANTACHIE**  
Tecumseh x Profit | 4288876



Now available  
™gender SELECTED!



**VISIT OUR BOOTH TO LEARN MORE ABOUT OUR SHOWCASE™ LINEUP!**

Photos taken by Pearls Pics and Next Level Images. ™gender SELECTED is a trademark of Select Sires Inc. All gender SELECTED semen is processed using Ultraplus™ technology. Bulls subject to availability.

SELECT SIRES  
**MEMBER**  
COOPERATIVE

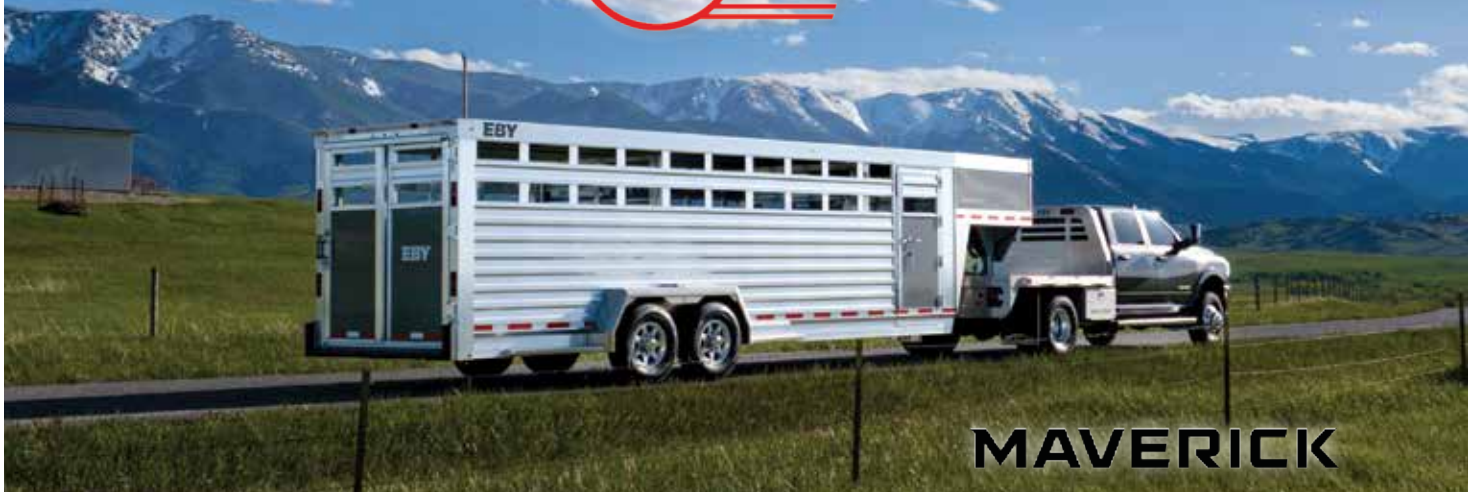


Local Beef Specialists

Kevin Hinds - 614-205-7173

Jim Ray - 614-205-7176

614-878-5333 · [www.ssmcoop.com](http://www.ssmcoop.com)



## MAVERICK



### BOLD STYLING AND MODERN UPGRADES

We understand your passion for excellence and put the same passion into building trailers and truck bodies with innovative designs, strong construction and features that make a difference. Give us a call and learn why leading livestock producers around the country count on Eby quality!

## RUFF NECK



**NW OHIO SALES REP**  
**J.R. KAVERMAN**  
(740) 956-0623  
JR.KAVERMAN@MHEBY.COM



**CENTRAL OHIO SALES REP**  
**STEVE RITTENHOUSE**  
(614) 572-5247  
STEVEN.RITTENHOUSE@MHEBY.COM



(614) 879-6091  
www.mheby.com



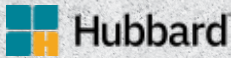
AVAILABLE AT EBY OHIO DEALERS:



SCAN THE QR CODE TO FIND YOUR NEAREST EBY DEALER.



# 2026 SPONSORS



**BREEDS BARN SPONSOR**  
Hubbard Feeds



**EXPO COMMITTEE APPAREL**  
Farm Credit Mid America



**OFFICIAL UTILITY VEHICLE SPONSOR**  
AgPro



**JUNIOR SHOW SHOWMANSHIP RING**  
McGuire Farm and Excavating



**JUNIOR SHOW MARKET ANIMAL RING**  
Fayette County Cattle Feeders



**JUNIOR SHOW HEIFER RING**  
Cattle Visions LLC



**JUNIOR SHOW BUCKEYE BREEDERS SERIES**  
CampbellCo and Dave Campbell Insurance



**STERTZBACH CATTLE CO**  
Civista Bank



**JUNIOR SHOW SHOWMANSHIP**  
Cattle Visions  
Show-Rite  
Engelhaupt Embroidery



**TOP 5 MARKET ANIMAL SPONSOR**  
Andrews Cattle Company  
Andrews Auctioneer  
Civista Bank



**TRANS OVA GENETICS TOP 5 HEIFER SPONSOR**  
TransOva Genetics

**D&J SALES & SERVICE INC. SPONSOR OF THE DAY - FRIDAY**  
D&J Sales and Service Inc.

**TRANS OVA GENETICS OFFICIAL EXPO WI-FI SERVICE**  
TransOva Genetics

**THE OHIO STATE UNIVERSITY OFFICIAL EXPO VET**  
The OSU Veterinary Medical Center



**CONCESSION STAND DRINKWARE**  
RC Packing, Inc.  
Baird



**JUNIOR SHOW BACKTAG SPONSOR**  
Cherry Fork Feed & Supplies



**JUNIOR SHOW BROADCAST SPONSOR**  
Linde's Livestock Photos



**YOUTH BQA SPONSOR**  
Wood County Beef Producers



**CATTLEMEN'S LEARNING CENTER**  
Farm Credit Services  
First Defense Calf Health



**VOLUNTEER NAME TAGS**  
D&J Sales and Service Inc.



**COWBOY HAPPY HOUR SPONSORS**  
MH EBY Inc/ EBY Trailers



**PRIME GENERAL SPONSOR**  
Heartland Feed Services  
K Buildings  
Mercer County Cattleman's



**CHOICE GENERAL SPONSORS**  
Advanced Ag Products, LLC  
Corteva Agriscience Range & Pasture  
Williams County Beef Producers



**SELECT GENERAL SPONSORS**  
HerdPro  
Reinecker Ag, LLC



**JUNIOR SHOW PLATINUM SPONSORS**  
Griswold Genetics  
Heartland Feed Services  
Orchard View Farm



**COLISEUM TIE RAIL SPONSOR**  
Barbour Cattle  
Linde's Livestock Photos  
Pugh Central Station  
SC Online Sales

### JUNIOR SHOW GOLD SPONSORS

Benchmark Graphic Co  
Goettemoeller Show Cattle  
Henry County Cattlemen's Association  
JS Simmentals  
PBS Animal Health  
Rodgers Cattle Co.  
Schaeffer Show Cattle  
ShowTime Premium Feeds & ShowTime Cattle Co.  
Umberger Show Feeds  
Vanhove Cattle

### JUNIOR SHOW SILVER SPONSORS

Boviteq  
Buckeye Border Embryo Transfer  
HFS Angus - Tim & Elizabeth Harsh  
HerdPro  
Miller Family Show Cattle  
Morrow County Farm Bureau  
Ohio CattleWomen  
Reinecker Ag, LLC  
Vytelle

### JUNIOR SHOW BRONZE SPONSORS

CJ Brown Studios  
Highland Livestock Supply Ltd  
Logan County Cattle Association  
Stark County Quality 4-H Beef Club

### JUNIOR SHOW BREED SPONSOR

**Angus**  
Mazey Show Stock

**Charolais**  
Lehman Show Cattle

**Chianina**  
Winegardner / Klingaman Show Cattle

**Low % Chianina**  
Winegardner / Klingaman Show Cattle

**ChiAngus**  
Winegardner / Klingaman Show Cattle

**Hereford**  
Buckeye Herford Association

**Maine-Anjou**  
Ohio Junior Maine Association

**MaineAngus**  
Ohio Junior Maine Association

**Simmental**  
Ohio Simmental Association

**Limousin/Limousin - Flex**  
Ohio Limousin Association

**Crossbred Steer - Division III**  
Bailey Show Cattle

**Market Heifer**  
Fennig Show Cattle

### GENERAL SALE RING BANNER SPONSORS

4 Wiley Farm  
CBG Agri Financial Services Inc.  
Hubbard Feeds/ Crystalyx

### BEST PROGRAM SPONSORING PARTNERS

AgPro  
Bob Evans Farms  
Boyert Show Cattle  
Diamond T Land & Cattle  
Dickson Cattle Co  
Folks Printing  
Jones Show Cattle  
M.H. EBY  
Performance Training Solutions  
RD Jones Excavating  
Ricer Equipment  
Robbins Show Steers  
Shepard Cattle Company  
Six R Farms  
Sullivan Supply  
Weaver Livestock

*Thank You!*  
**2026 OHIO  
BEEF EXPO  
SPONSORS**



**FIND US AT  
THE OHIO  
BEEF EXPO**

**Outside between Voinovich & Cooper Arena**

**MARCH 19 - 22, 2026**



*Contact:*

Tisha Wolfer  
513-252-8158

*Call to preorder  
your equipment*

*See You There!*



# JUNIOR SHOW

March 20 - 22

Friday, March 20 - Showmanship

Saturday, March 21 - Market Animals

Sunday, March 22 - Heifers

All shows will take place in Taft Coliseum

**ALL JR. SHOW CATTLE MUST HAVE A NEGATIVE BVD TEST TO EXHIBIT**

## 2026 JUDGES



**MARKET ANIMALS**

Brent Cromwell



**HEIFERS**

Brady Jensen



Carly Wesner-Riley



**SHOWMANSHIP**

Maria Crandell

## ONLINE SHOW ENTRIES & CHECK-IN

All cattle must be entered online. Participants must register into the system at [best.ohiocattle.org](http://best.ohiocattle.org) and enter their cattle information. The online show entry window will open Monday, March 9. **Registered animals must be in the junior exhibitor's name; exhibitors must show their own animal.**

Check-in Times located in the Gilligan Building:

- Thursday, March 19 - 4:00 - 8:00 p.m.
- Friday, March 20 - 8:00 a.m. - 11:00 a.m.
- Friday, March 20 - 5:00 p.m. - 6:00 p.m.
- Saturday, March 21 - 10:00-11:00 a.m. (Breeding Animals ONLY)
- Saturday, March 21 - 6:00 p.m. deadline (Expo Sale Heifers ONLY)

Showmanship sign-up is completed through the online show entry and must be completed by Tuesday, March 17 in order to participate in showmanship.

## STALLING PROCESS

Due to construction and trying to avoid major backup when unloading, cattle and equipment are permitted on the Ohio Expo Center grounds **beginning 7:30 a.m. on Tuesday, March 17.**

**Ohio Beef Expo is offering the following stalling options:**

- Prepay for premium stalls on the online auction on Show Circuit on Feb. 25, 2026
- Pre-assigned stalls via the online stalling link for what is available after the online auction in the Gilligan building **(FREE OPTION)**
- Stall when you get to the fairgrounds in the Gilligan building **(FREE OPTION)**

All pre-stalling for Junior Show cattle will take place online March 2-4, like state fair stalling has been handled in previous years. Stalling will open March 2 and close March 4. If an exhibitor did not purchase stalls in the online auction, this form will be used to stall cattle ahead of time **(FREE OF CHARGE).**

Exhibitors will use a map of the barns to submit their top three preferences. Stalls will be assigned based on these submissions. Links to the online stalling will be available in early March at [www.ohiobeefexpo.com](http://www.ohiobeefexpo.com) and ohio cattlemen's association facebook page and best program facebook page.

Exhibitors may reserve stalls for other exhibitors if they have all their entry information, the other exhibitor is a paid, current member of OCA and has entered and paid for their show entries.



National Roper Supply (NRS) is generously donating several items to the Ohio Beef Expo, which will be featured during the Thursday evening social on March 19 at 5:30 p.m. in the Trade Show area. Attendees are encouraged to join us to check out these exciting items, connect with the NRS team, and learn more about their continued support of the beef industry. Be sure to stop by and take advantage of this opportunity to engage with one of the industry's leading retailers.

**HIS & HERS BOOTS, GIFTCARDS, & MORE**

*Thank You!*

**NRS FOR SUPPLYING THESE GIVAWAYS**



# Official Clothing

**Hoodies - T Shirts - Jackets**



**Get the 2026 Designs**  
Booth 108 Voinovich Hall

Proceeds fund the Saltwell Western Store - Ohio Beef Expo Scholarship providing over \$21,000 to date.



2000 Seven Mile Drive | New Philadelphia, OH 44663  
330-343-0388 | [www.SaltwellWesternStore.com](http://www.SaltwellWesternStore.com)

Stay tuned to the OCA Facebook and Instagram pages, as well as [ohiobeefexpo.com](http://ohiobeefexpo.com), for updates and additional information as we get closer to the Expo. We look forward to seeing you in March!



# JUNIOR SHOW

## ADDITIONAL INFORMATION

All cattle must remain in the barn or at designated tie-outs at all times and may not leave the grounds before or after check-in. Any violations of this rule will result in dismissal from the show.

There will only be one stall per animal available in the Gilligan building. Exhibitors in violation of the rule will be asked to move per the junior show committee's discretion.

No access to the barn for stalling will be permitted prior to Tuesday, March 17 at 7:30 a.m. Cattle will be stalled online by show management prior to arrival at which time all entry fees and OCA memberships must be paid. Any exhibitor stalling without the permission of show management may be asked to move. Exhibitors stalling after operating hours of the show office must call the number posted on the door and check-in at the show office by 8:00 a.m. the following day. All market animals must be entered online and arrive no later than 6:00 p.m. on Friday, March 20 to be checked-in and all heifers must be entered online and arrive by no later than 11:00 a.m. on Saturday, March 21 to be checked-in. Please arrive at the fairgrounds with cattle at least one hour prior to the closure of check-in to ensure completion of stalling and check-in.

NO TENTS are allowed in the Gilligan Building.

## 2026 OHIO BEEF EXPO PATRIOT TRUCK AND TRAILER SOLUTIONS

# HILLSBORO

## SHURCO



COME SEE US AT BOOTH-

#275-278

&

#286-288

ACROSS FROM THE FOOD COURT



# NovaGraz™

HERBICIDE

## The Only Herbicide to Control Weeds and Protect White Clover

### Meet NovaGraz™ herbicide.

NovaGraz™ herbicide is a ground breaking™ weed control solution that enables producers to preserve white clover and annual lespedeza while providing enhanced broadleaf weed control.

That means reaping the benefits of white clover in pastures with improved forage quality and animal performance benefits.

### Learn More at [NovaGraz.US/ByTheNumbers](https://www.novagraz.us/bythenumbers)



To find your local Corteva Range and Pasture Specialist  
visit [rangeandpasture.com/specialist](https://www.rangeandpasture.com/specialist)

 @CortevaPastures

 @CortevaPastures

 @CortevaPastures



Visit us at [rangeandpasture.com](https://www.rangeandpasture.com)

™® Trademarks of Corteva Agriscience and its affiliated companies. White clover and Annual lespedeza exhibit some initial injury (such as lodging and loss of vigor) but recover with NovaGraz™. NovaGraz is not registered for sale or use in all states. Contact your state pesticide regulatory agency to determine if a product is registered for sale or use in your state. Always read and follow label directions. ©2026 Corteva. RP-36153 COR(01/26)



TAGGING **TODAY.**

TAGGING **TOMORROW.**



Merck Animal Health is committed to delivering the trusted Allflex® branded products you depend on for success. Our industry-leading visual tags and proven electronic identification help you achieve your operational goals with the readability and durability producers have relied on for generations. Identify your herd—and your operation's future with the Allflex portfolio.

**Learn more at [AllflexUSA.com](https://www.AllflexUSA.com)**