

2024 **BEEF**  
**EXPO**

March 14 -17, 2024 | Columbus, Ohio  
**SHOW PROGRAM**



**THE OHIO STATE  
UNIVERSITY**

College of Veterinary Medicine  
Large Animal Services  
Program Sponsor



# PRE-ORDER. PICK UP. SAVE.



Pre-order Conventional or **Ultraplus** through your local sales rep by Friday, March 8th to receive **FREE DELIVERY** to the 2024 Ohio Beef Expo, and receive **FREE SHIPPING** for all walk-up orders placed at the show!

Seldom Rest **NEXT MOVE** 1133

**NEW**



ANGUS

551AN01906 • AAA 20637393 • Classen x Style

Clemson **ELITE** 41J

**NEW**



Purebred, Homozygous Polled, Homozygous Black  
551SM09099 • ASA 4068318 • Copacetic x Upgrade

WCC/RRF **TROUBADOR** 0130H

**NEW**



3/4 SM 1/4 AN, Homozygous Polled, Homozygous Black  
551SM09095 • ASA 3904275 • Copacetic x Built Right

SHF **HOUSTON** D287 H086



Homozygous Polled, Pigment: LE/100 RE/100  
551HP01633 • AHA 44123641 • Daybreak x Loewen 44X

NJW 202C 173D **STEADFAST** 156J ET



Homozygous Polled, Pigment: LE/100 RE/100  
551HP01644 • AHA 44276463 • Endure x Homegrown

STgenetics® Beef will pay the 2024 membership dues for **NEW** and **EXISTING OCA** members who make a semen purchase of \$500 or more!

## CONTACT YOUR LOCAL REP TO PRE-ORDER FOR THE 2024 OHIO BEEF EXPO!

**ZACH CLODFELTER**  
Regional Manager  
737-881-9120

**ALLEN GAHLER**  
Graytown, OH  
419-350-2091

**TY MCGUIRE**  
Eaton, OH  
937-533-3251

**JON DAVIS**  
Bidwell, OH  
740-645-7947

**JOE TUCKER**  
Galion, OH  
419-961-2333

**LINDSEY GRIMES HALL**  
Hillsboro, OH  
937-763-8115

Beef@STgen.com | #STgeneticsBeef | STgen.com

# 2024 BEEF EXPO

March 14 -17, 2024 | Columbus, Ohio

## SCHEDULE

### WEDNESDAY, MARCH 13

\*\*No cattle are permitted on the fairgrounds before 7:30 a.m.\*\*  
Noon - 5 p.m. Large Equipment Move-in

### THURSDAY, MARCH 14

8 a.m. - Noon Trade Show set up for large indoor equipment  
Noon All breeding cattle must be in place  
Breeds Building  
Noon - 3 p.m. Trade Show set-up outdoor & small indoor displays  
3 - 6 p.m. Trade Show Open, Voinovich Building  
4 - 8 p.m. Junior Show Check-in, Gilligan Complex  
7:30 p.m. The Social, Hilton Columbus/Polaris

### FRIDAY, MARCH 15

6:30 - 7:30 a.m. Judging Contest Check-in & Packet Pick-up, Coliseum  
8 a.m. - 11 a.m. Junior Show Check-in, Gilligan Complex  
8:30 a.m. - 6 p.m. Trade Show Open, Voinovich Building  
9 a.m. Judging Contest Begins, Coliseum  
10 a.m. - 5 p.m. Genetic Pathway Open, Breeds Building  
10 a.m. Mini Hereford Show, Cooper Arena  
11 a.m. Online Feeder Cattle Sale, Voinovich Building  
12:00 p.m. Youth Beef Quality Assurance, Coliseum  
12:30 p.m. Hereford Show, Cooper Arena  
Shorthorn Show, Cooper Arena  
1 p.m. Aberdeen Angus Sale, Voinovich Building  
Murray Grey Show, Breeds Building  
Junior Showmanship, Coliseum  
2 p.m. Angus Parade, Cooper Arena  
2:30 p.m. Judging Contest Awards, Coliseum  
3 p.m. Limousin Sale, Voinovich Building  
4 p.m. Red Angus Sale, Voinovich Building  
4:30 - 5:30 p.m. Cowboy Happy Hour, Voinovich Building  
5 p.m. Mini Hereford Sale, Voinovich Building  
5 - 6 p.m. Junior Show Check-in, Gilligan Complex

### SATURDAY, MARCH 16

8 a.m. - 5 p.m. Junior Market Animal Show, Coliseum  
8:30 a.m. - 6 p.m. Trade Show Open, Voinovich Building  
9 a.m. Hereford Sale, Voinovich Building  
10:30 a.m. Shorthorn Sale, Voinovich Building  
10 - 11 a.m. Junior Show Check-in, (Heifers Only), Gilligan Complex  
10 a.m. - 5 p.m. Genetic Pathway Open, Breeds Building  
12 p.m. Angus Sale, Voinovich Building  
2 p.m. Simmental Sale, Voinovich Building  
4 p.m. Maine Anjou Sale, Voinovich Building  
4 - 5 p.m. Cowboy Happy Hour, Voinovich Building  
6 p.m. deadline Junior Show Check-in for Expo Sale Heifers, Gilligan Complex

### SUNDAY, MARCH 17

8 a.m. - 5 p.m. Junior Heifer Show, Coliseum  
8:30 a.m. - 2 p.m. Trade Show Open, Voinovich Building  
10 a.m. - 1 p.m. Genetic Pathway Open, Breeds Building

#### EVENT LOCATION

Ohio Expo Center  
717 East 17th Ave.  
Columbus, Ohio 43211

#### OFFICIAL WEBSITE

[www.ohiobeefexpo.com](http://www.ohiobeefexpo.com)

#### OFFICIAL HOTEL

Hilton Columbus/Polaris  
8700 Lyra Drive  
Columbus, OH 43240  
614.885.1600

#### OHIO CATTLEMEN'S ASSOCIATION

10600 U.S. Highway 42  
Marysville, OH 43040  
614.873.6736



# EVENTS & PROGRAMS

## COWBOY HAPPY HOUR

OCA will be hosting a happy hour on Friday and Saturday, March 15 and 16. On Friday, the happy hour will be 4:30 - 5:30 p.m. and Saturday 4 - 5 p.m. The happy hours on both days will take place at the OCA booth in the Ohio Beef Expo Trade Show and will be a social event you won't want to miss.

OCA members will be treated to complimentary snacks and drinks during the Cowboy Happy Hour. Stop by the OCA membership booth for a wristband to gain access to the Happy Hour area.

## THE SOCIAL

The Ohio Cattlemen's Association invites you to join in an evening of networking with fellow cattlemen and industry leaders at The Social, on Thursday, March 14, 7:30 p.m. at the Hilton Columbus/Polaris. The Social is open to OCA membership, Expo cattle and trade show exhibitors and volunteers. It's free to attend and will include appetizers and drinks.

Again this year, The Social will feature LIVE music from The Northern Burnouts band!

The Social will feature a live auction with proceeds going toward OCA's Political Action Committee (PAC) fund to support ag-friendly candidates in the next election. Visit The Social at the Hilton, the Ohio Beef Expo headquarters, on Thursday evening to bid. We hope to see you there!

### ABOUT THE BAND

The seeds of the Northern Burnouts sound took root in Midwest Ohio, where founding members Lane Manning and Joe Mansion were raised. After playing music for most of their lives, they came together and formed as a duo. Bringing their rock/country sound to venues as east as Pennsylvania and as west as Kansas. The Burnouts are no strangers to the cattle industry, with Joe being a member of livestock judging teams throughout high school, and Lane growing up showing cattle around the Midwest with his family, then taking his interest in the beef industry to OSU ATI where he majored in Beef Production. The Burnouts are excited to return to the Ohio Beef Expo to provide entertainment after attending and exhibiting many times earlier in life.

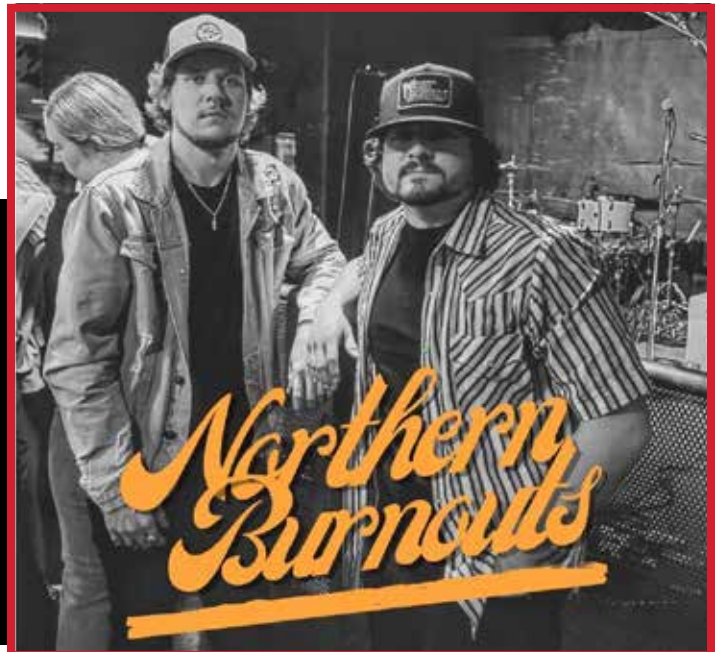
## JUDGING CONTEST -

### PRE-REGISTRATION ONLY BY MARCH 10

The Ohio Beef Expo Judging Contest is Friday, March 15 in the Coliseum. No in-person registration will be accepted. All registration must be completed prior to the event. Early registration deadline is **Thursday, Feb. 29, 2024** at \$10 per participant or \$40 per team. The LATE registration deadline is **March 1-10, 2024** at \$15 per participant or \$60 per team. ALL individuals and teams participating in the judging contest at the Ohio Beef Expo will sign up online at [ohiobeefexpo.com](http://ohiobeefexpo.com). Contestant check-in on March 15 will be held from 6:30 - 7:30 a.m.

Teams will consist of three or four people. The individuals do not need to be from the same county or chapter. The three highest scores will count for team placings. Divisions will be offered for juniors (8-13 as of Jan. 1) and seniors (14-21 as of Jan. 1). Six classes of cattle will be evaluated and one or more classes will include questions and the use of performance data.

Awards will be presented to the top 10 individuals and top 5 teams in each division. This recognition will be held in the Taft Coliseum at approximately 2:30 p.m.



# PREMIUM BEEF BULLS = PREMIUM QUALITY



TRCC PANDEMIC  
REG#3748285



1ELEVEN IN THE BLOOD  
REG#4877334



DUFF ECO BOOST 2208  
REG#20405097



CALVING EASE PLUS STYLE  
C-4 VANTAGE  
BLACK/GOLD V306  
REG#20783464



CALVING EASE PLUS EYE APPEAL

DUFF HD 2046  
REG#4466181

Working directly with  
breeders  
*for* breeders

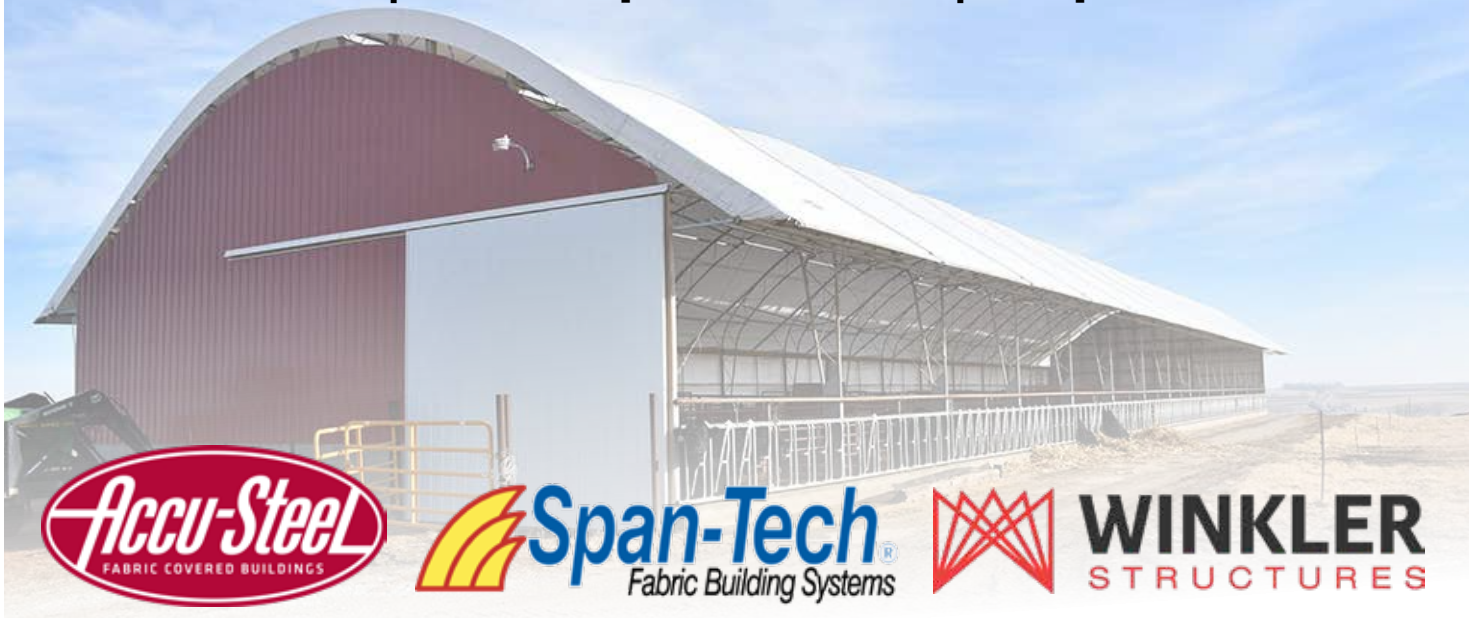
Premium Beef Genetics  
Office 450 | 385 | 1238  
8618 S Western Perkins OK



# BORN PARTNERS<sup>LLC</sup>

51236 Telegraph Rd Amherst OH 44001

440-276-1771 | info@bornpartnersoh.com | bornpartnersoh.com





# EVENTS & PROGRAMS

## YOUTH BQA

Youth Beef Quality Assurance training will be offered on Friday, March 15, at 12:00 p.m. in the Coliseum. Two age divisions for BQA will be available: 8 - 13 and 14 - 21. BQA training is a requirement for the OCA BEST program. All participants will complete a form following their training that will be returned to the OBC office. County extension offices will be notified of each participant's attendance at the training.

## FEEDER CATTLE SALE

The 2024 Ohio Beef Expo will continue to host a feeder cattle internet board sale, sponsored by United Producers, Inc. (UPI). The sale will be held Friday, March 15 at 11 a.m. in the Voinovich Building sale ring on the Ohio Expo Center grounds.

A board sale offers consignments of uniform packages of feeder cattle. The cattle are sold while on the farm with specific pick-up period defined in the sale catalog. Typical pick-up times range from one week to four months after the sale. Lots are typically sold in 48,000 to 50,000 pound load lots. However, smaller groups are encouraged as well. These sales may include all types and breeds of feeder cattle. Uniform lots sold in groups that would average between 400 and 900 pounds are common. Uniform groups of Holstein and beef on dairy feeder cattle may range between 250 pounds to 900 pounds.

Consignments are open to Ohio and out-of-state producers. Earlier consignments are encouraged since videos and pictures of all consignments will be posted on UPI's web page. Sale consignors must be OCA members (\$75 membership) for 2024. Sale commission will be \$1.50 per cwt. The commission will be divided between the UPI sourcing market and OCA. Sale catalogs will be posted on UPI and OCA's websites at least one week in advance of the sale.

To consign cattle or request information, contact your local United Producers, Inc. representative or Sam Roberts at 937-477-0060.

## OFFICE HOURS & NUMBERS

### Main Office

### Trade Show Office

### Voinovich Building

614-824-4044

Wed. Noon - 5 p.m.

Thurs. 8 a.m. - 6 p.m.

Fri 8 a.m. - 6 p.m.

Sat 8 a.m. - 6 p.m.

Sun 8 a.m. - 2 p.m.

### Breed Shows Office

### Sales Office

### O'Neill Building

614-824-3844

Thurs. 7 a.m. - 6 p.m.

Fri 8 a.m. - 6 p.m.

Sat 8 a.m. - 6 p.m.

### Junior Show Office

### Gilligan Building

614-824-3864

Wed. 7 a.m. - 7 p.m.

Thurs. 7 a.m. - 8 p.m.

Fri 7 a.m. - 9 p.m.

Sat 6 a.m. - 6 p.m.

Sun 6 a.m. - End of Show

### Fax Machine Breeds Office

### O'Neill Building

614-824-3086





**Applications:**  
Feed & seed storage  
indoors or outdoors

**Capacity:**  
1/2 Ton Cap.,  
1 Ton Cap., 3 Ton Cap.

**Material:**  
All steel frame,  
Tough roto - molded tank

For more details and specifications about  
any of our Containers please visit

**TopperHopper.com**

Or just give us a call at **810-516-7779**

**810-233-0440 ext. 1253**



**Series 45 One Ton Hopper**

- Tough Roto Cast Tank
- Powder Coated Steel Frame
- Weather Proof Hinged Lid
- 2 Way 8 x 3 Fork Opening
- Capacity 2,000 Pounds
- Feeds Easily into Standard Five Gallon Bucket
- Rodent Proof
- Fits in the Back of Truck Bed - 48" Wide



**Series 20 Half Ton Hopper**

- Tough Roto Cast Tank
- Powder Coated Steel Frame
- 4 Way Fork Entry
- Capacity 1,000 Pounds or 900 Pounds of Ground Feed
- Feeds Easily into Standard Five Gallon Bucket
- Base Dim. 45 x 48



Made in  
Flint, Michigan

**1/2 Ton, 1 Ton, or 3 Ton Capacity**





# SEEDSTOCK SHOWS & SALES

## SALE CATTLE IDENTIFIED BY EID TAGS

All Ohio Beef Expo Sale Cattle will be identified with EID tags to comply with the USDA Animal Disease Traceability (ADT) rule for interstate shipment of cattle. This means that no matter what an individual state's requirements for transporting cattle may be, potential Expo cattle buyers can be assured that they can easily ship their Expo purchases into any state. For more information contact the Ohio Beef Expo official veterinarian Dr. Eric Gordon at 937-642-2936 or see the 2024 Ohio Beef Expo health requirements at [www.ohiobeefexpo.com](http://www.ohiobeefexpo.com).

## BVD TESTS MANDATORY

All cattle (from Ohio and out-of-state) consigned to breed sales, show cattle, display breeds and Genetic Pathway cattle at the 2024 Ohio Beef Expo must be tested negative for Bovine Viral Diarrhea (BVD) persistent infection (PI) status prior to arrival at the 2024 event. This includes all cattle entered in the Ohio Beef Expo Junior Show. Any animals arriving at the Expo without a negative BVD PI test, will be ineligible to participate in the 2024 Ohio Beef Expo and will be excused from the show grounds. Type of test and negative test results must be listed on the required health certificate and/or laboratory report of negative status provided. See 2024 Ohio Beef Expo health requirements at [www.ohiobeefexpo.com](http://www.ohiobeefexpo.com).

## TRICHOMONIASIS

Ohio has mandatory Trichomoniasis rules for all bulls entering Ohio from any other state. Virgin bulls under 18 months of age on the date of the sale must have a virgin statement on the CVI accompanied by the veterinarian's and owner's signature. Bulls 18 months of age or older on the date of the sale and all non-virgin bulls must have a PCR test within 28 days of the date of the sale. See 2024 Ohio Beef Expo health requirements at [www.ohiobeefexpo.com](http://www.ohiobeefexpo.com).

## ADDITIONAL SALE CATTLE HEALTH REQUIREMENTS

Cattle in Ohio Beef Expo sales are sold into many different states and it is important that consignors keep this in mind when planning for the sales.

The lot numbers of the animals that do not meet the Ohio Beef Expo health requirements will be announced prior to each breed sale. Health papers (CVIs) will NOT be issued for cattle that do not meet the Ohio Beef Expo health requirements. These health papers are typically written at the sale's clerking table and accompany the cattle to the new buyer's location.

A list of the lots that do not meet the requirements will be available in the Beef Expo office by Friday at 2 p.m. For more information, go to [www.ohiobeefexpo.com](http://www.ohiobeefexpo.com).

## BUYER PARKING - FRIDAY & SATURDAY, MARCH 15-16

For Friday and Saturday only, special trailer parking for Ohio Beef Expo sale buyers will be available on the main part of the fairgrounds just east of the O'Neill Barn where the sale cattle are located. To access the parking area, cattle trailers should enter the fairgrounds off of 11th Avenue at the OHIO gate. Avoid the hassle and long walk to get your trailer by parking on the grounds. This special trailer parking area is expected to fill up, so plan to arrive early.

All other cattle trailers, including show and sale cattle exhibitor trailers and junior show trailers MUST park north of 17th Avenue after unloading.

**VIEW FAIRGROUNDS MAP AT [OHIOBEEFEXPO.COM](http://OHIOBEEFEXPO.COM)**



## ABERDEEN ANGUS

Representative Roger Hunker  
Sale Manager Roger Hunker  
Auctioneer Darby Walton

## ANGUS

Representative Jacy Bapst  
Sale Manager Jacy Bapst  
Auctioneer Ron Kreis  
Parade

## CHAROLAIS

Representative Dave White

## GELBVEH

Representative Kim Allen

## HEREFORD

Representative Lisa Keets  
Sale Manager Lisa Keets  
Auctioneer Dale Stith  
Judge Taylor Feickert

## LIMOUSIN

Representative Kyle Baker  
Sale Manager Roger Hunker  
Auctioneer Darby Walton

## MAINE-ANJOU

Representative Terry Muir  
Sale Manager Craig Reiter  
Auctioneer Kevin Wendt

## MINIATURE HEREFORD

Representative Dan Wiley  
Sale Manager Roger Hunker  
Auctioneer Darby Walton  
Judge Jake Osborn

## MURRAY GREY

Representative Sheri Clark  
Judge Aaron Arnett

## RED ANGUS

Representative Ryan LePage  
Sale Manager Lisa Kries - Anderson  
Auctioneer Ryan LePage

## SHORTHORN

Representative Jeff Winkle  
Sale Manager Jeff Aegerter  
Auctioneer Kevin Wendt  
Judge Brad Winegardner

## SIMMENTAL

Representative Pam Haley & Christina Fisher  
Sale Manager Doug & Debbie Parke  
Auctioneer Ron Kreis



**IS YOUR LOCAL BANK KEEPING UP  
WITH THE VOLATILE CATTLE PRICES?**

**WE ARE!**

**Contact a loan officer to get started today.**

**Ashley Culp** • 989-430-3424

**Brian Fracker** • 740-403-6225

**John King** • 419-937-4148

**Ben Seibert** • 419-303-0907

**[WWW.UPRODUCERS.COM/CREDIT-SERVICES](http://WWW.UPRODUCERS.COM/CREDIT-SERVICES)**



# GENETIC PATHWAY

Friday & Saturday 10 a.m. - 5 p.m. | Sunday 10 a.m. - 1 p.m.

## GENETICS ON DISPLAY

The Genetic Pathway display will once again feature the country's best genetics. Live bulls and females will be on display between the hours of 10 a.m. to 5 p.m. daily. The Genetic Pathway area is housed in the Breeds Barn.

Additionally the country's top semen companies will be in the Genetic Pathway area to talk to you about ordering semen for your spring breeding needs.

The Genetic Pathway office will be located in the breeds office where the cattle are stalled. For questions or for maps, stop by the office and ask to see the Genetic Pathway representative.

## STOP BY THE OCA MEMBERSHIP BOOTH

Renew your membership, visit with other members and board representatives and catch up on the latest information in the beef industry. Join OCA or recruit a member to be in the ongoing recruitment contest.

## CATTLE THEFT REWARDS SIGN

Do you have \$2,500 OCA cattle theft reward signs posted? Be sure to stop by the OCA booth to pick yours up during the Expo.

## OCA APPAREL AND BRANDED ITEMS

The OCA booth will offer for sale OCA apparel and beef branded items such as "EAT BEEF" tumblers, hats, hoodies, koozies and more. Be sure to stop by and stock up!



## GENETIC PATHWAY EXHIBITORS

- Boviteq
- Boyert Show Cattle
- Brennstuhl Farms
- Cardinal Cattle Company
- CNC Cattle Company
- Cunningham Family Farms
- GEN II Cattle Farms
- Griswold Cattle
- HeatSiecker
- Jeff Miller Show Cattle
- Jones Show Cattle, Bryson Family Farms, Stertzbach Cattle Company, Wonter Brook Cattle Company
- Kastel Show Cattle
- Lautner Farms
- M & L Show Cattle
- Matt Lautner Cattle
- Midwest Genetics
- Minnaert Cattle
- Phantom Halters & Breeders World
- Premium Beef Genetics
- Pritchard Cattle Company
- Rodgers Cattle Company
- Schaeffer Show Cattle
- ShowTime Cattle Company
- ShowTime Premium Feeds
- The Bull Exchange
- Top Sires
- Trans Ova Genetics
- Vanhove Cattle
- Vytelle
- Walsh Cattle
- Y - NOT Cattle

Save the Date  
Aug. 24, 2024



Delaware, Ohio

Connect with friends while listening to live music, enjoying drinks, delicious appetizers, a beef entree, and desserts.

All proceeds support the Ohio Cattlemen's Foundation youth scholarship fund benefiting the next generation of cattle industry leaders.

REG #: 4352279 DOB: 3/09/2022

**GEN II**  
**MONEYLINE**

*Sire:* MAY CHARISMA 008W  
**DJ'S THE OUTSIDER**  
DJS SC SP ANDELLE J 921

*Dam:* FSP NEAR PERFECT  
**FSP SIERRA CRYSTAL 043 ET**  
FULL DID TO FDF PERFECTION BEE  
FSP SIERRA CRYSTAL

**GEN II**  
CATTLE FARMS

LARRY JAMES-OWNER, MANAGER 674-835-0209 • BRIAN JENNINGS, OWNER 674-952-6952 • CHERYL JENNINGS OWNER 674-780-7628

**SEMEN AVAILABLE THROUGH** **CATTLE Visions**





**CATTLEMEN'S LEARNING CENTER**

New this year, stop by the Voinovich sale ring on the trade show floor for the Cattlemen's Learning Center featuring 45-minute educational seminars with topics of interest to commercial cattlemen.

Seminar #1  
Thursday, March 14 - 4 p.m. **AVAILABLE**

Seminar #2  
Thursday, March 14 - 5 p.m. **AVAILABLE**

Seminar #3  
Friday, March 15 - 9 a.m.  **AVAILABLE**  
A year in Forage and Weed Management

Seminar #4  
Friday, March 15 - 10 a.m.  **AVAILABLE**  
Livestock Risk Management Strategies  
Can you afford not to?

Seminar #5  
Sunday, March 17 - 9 a.m. **AVAILABLE**

Seminar #6  
Sunday, March 17 - 10 a.m. **AVAILABLE**



# TRADE SHOW

Thursday 3 - 6 p.m. | Friday & Saturday 8:30 - 6 p.m. | Sunday 8:30 - 2 p.m.

212 Livestock Products, LLC.....	301 - 302	FERA Diagnostics and Biologicals.....	272
ABS Global, Inc.....	296 - 296A	Foltz Ag Enterprises inc.....	223 - 225
Advanced Ag Products, LLC.....	292	Fowler Seed Marketing.....	294
*Ag Credit.....	125	GENEX.....	285A
Ag Net Communications		German Gourmet Nuts LLC.....	318
Ohio's Country Journal/ Ohio Ag Net.....	239	Gro-Tec, Inc.....	202
*Ag-Pro.....	196 - 199	Harold's Equipment.....	219
AgriBuckle-The Leather Box.....	126 - 127	Harrison Trailers LLC.....	OUTSIDE
All Aluminum Show Equipment.....	249 - 253	Heat Freedom LLC / Crown Royal Stoves.....	320
American Angus Association.....	289A	*Heritage Cooperative, Inc.....	242 - 246, 261 - 262
Back in the Barn Boutique.....	329	*Highland Livestock Supply Ltd.....	137 - 146, 167 - 170
*Bane-Welker Equipment.....	266 - 267	Hill's Supply.....	220
Benchmark Graphic Co.....	118	Horse Creek Outfitters.....	323 - 324
*Biozyme Inc.....	304	*Hubbard Feeds.....	240 - 241
*Boehringer Ingelheim.....	154	Interglobe Sire Service.....	293
Born Partners LLC.....	265	J Star Equipment.....	192 - 193, 203
Bowman Caramel Apples.....	311A	*Jividen's Farm Equipment LLC.....	227-228
Branded Western Co.....	330	*Kalmbach Feeds.....	259 - 260
Broken Arrow Woodworking.....	307-308	*Kent Nutrition Group.....	268 - 269
Butter Hide Tallow.....	328	Kurtz Boots.....	8 - 9, 20 - 21
Callicrate Banders.....	263	Lance's Trailer Sales.....	OUTSIDE
Cattle Visions, LLC.....	101 - 102	Leonard Truck & Trailer.....	129-131
*Central Life Sciences.....	270	Lewis Cattle Oilers.....	248
Cheap & Chic Boutique.....	26 - 27	Mail Pouch Tools.....	311B - 311C
Circle L Fence.....	215	Maplecrest Farms LLC/ICAP Crop Insurance.....	295
City Limits Western LLC.....	3 4, 11 - 12, 17 - 18	McBurney Livestock Equipment.....	264
CJ Brown Studios.....	132 - 134	*McGuire Wholesale Inc.....	275 - 278, 285 - 288
*Corteva Agriscience: Range & Pasture.....	206	MEMES INC.....	336 - 339
Country Chic Boutique.....	1-2	*Merck Animal Health/Aliflex.....	128, 155
Cow Hen Sow.....	319	*MH EBY INC.....	279 - 284
Cowco, Inc.....	221 - 222, 229 - 232	*Murphy Tractor.....	217 - 218, 233 - 234
Custom Hay Feeders.....	226	Ohio Beef Council.....	191, 204
*D & J Sales & Service Inc.....	298 - 300	*Ohio Cat/Ohio Ag Equipment.....	135 - 136, 147 - 148
Denim Thistle Company.....	332-333	Ohio Cattlemen's Association.....	159 -162, 177 - 180
*DHI Cooperative Inc.....	188	Ohio CattleWomen.....	149-150
Eastern Aberdeen Association.....	297	*Ohio Penal Industries.....	216
*Elanco Animal Health.....	187	Ohio Shorthorn Breeders Assn.....	286A
Elgin Service Center-K Buildings.....	273 - 274	OSU Beef Team.....	HALLWAY
Engelhaupt Embroidery llc.....	289 - 291	Paint Valley Farms.....	290A - 291A
Farm and Dairy Newspaper.....	271	*PBS Animal Health.....	151 - 153
*Farm Credit Mid-America.....	310	Possum Products, LLC Handmade Toys.....	25
Farm Girl Factory.....	10	Possum Run Ranch Wear.....	13 - 16
*Farm Science Review.....	309	*Priefert Ranch Equipment.....	163 - 166, 173 - 176
Farmer's Equipment & Repair.....	321 - 322	*Purina Animal Nutrition.....	157 - 158, 181 - 182
Farmhouse Bling.....	334 - 335	*QLF - Quality Liquid Feeds.....	205
*Fennig Equipment.....	112 - 113	*Reed & Baur Insurance Agency.....	189

Reinecker Ag, LLC .....247

\*Richfield Industries .....119

Riverwind Barn Cameras.....190

\*Rodoc Leasing and Sales / Midway Trailer Sales .....254 - 257

\*Rod's Western Palace .....194 - 195, 200 - 201

S & B Custom Innovation/ Herd Pro .....235 - 238

\*Saltwell Western Store.....311 - 317, 108 - 111

\*Select Sires Member Cooperative .....156, 183

Starred Leather & Co.....22 - 23

\*STgenetics.....303

\*Straight A's Arena Inc .....184 - 186, 208 - 214

Style & Grace Boutique .....5-7

Sullivan Supply Inc.....103 - 107, 120 - 124

Tangent Square.....19

The Back Forty Embroidery Company .....325 - 327

This Old Farm Meats and Processing.....258

Three Arrows Farm.....24

\*Umberger Show Feeds .....305 - 306

\*United Producers Inc. ....292A - 293A

USDA - NASS .....HALLWAY

Wagner Insurance Agency &  
Bluebird Meadow Llama Farm.....331

White's Show Supplies .....114 - 117

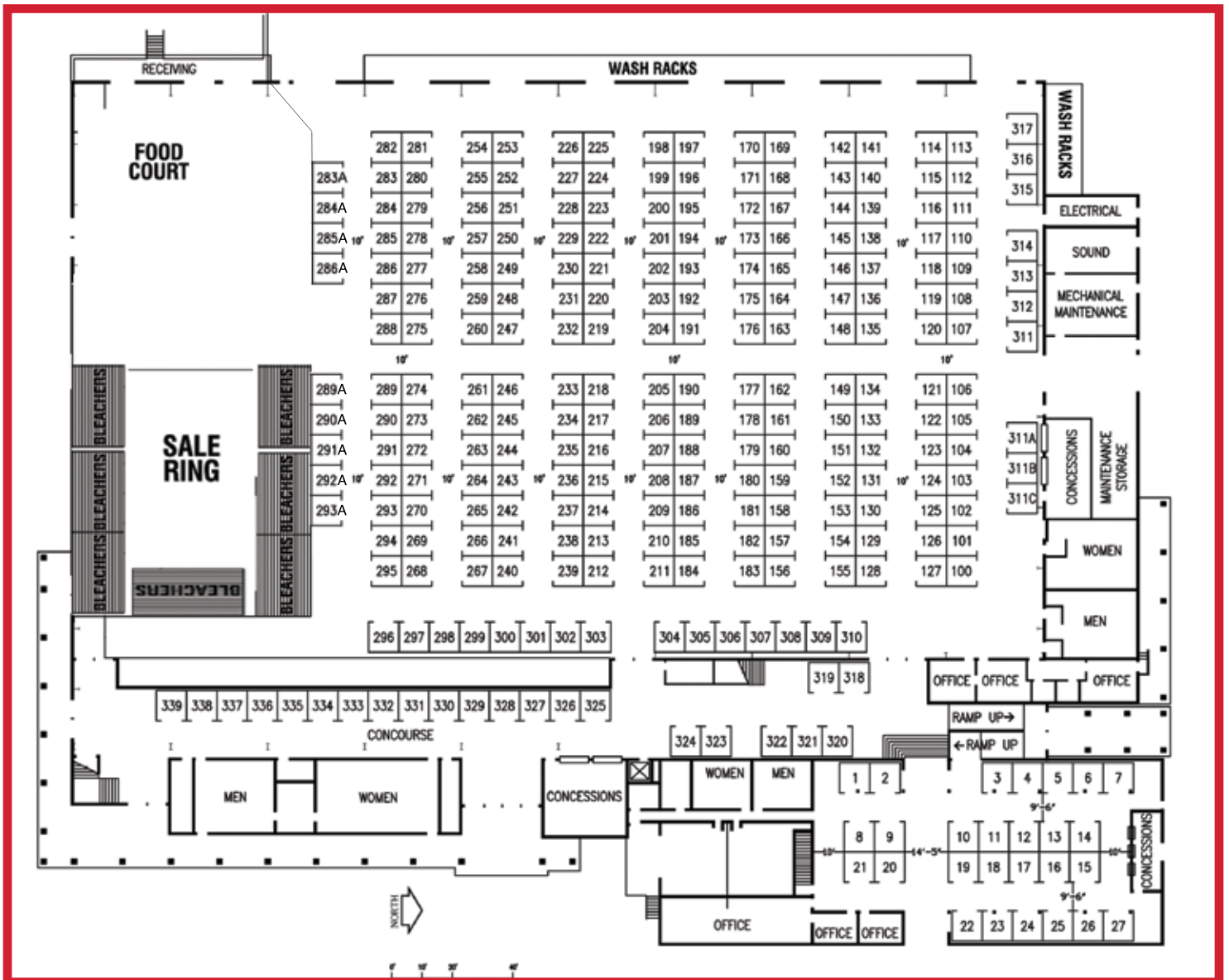
\*WM E Fagaly & Son, Inc. ....282A - 284A

WW Livestock System .....171 - 172

ZB Products LLC - Zip Bandit .....207

\*Zoetis .....100

\* Indicates members of OCA's Allied Industry Council



# Interglobe Sire Service

Pontiac, Illinois

## OUR SERVICES

- IVF & Conventional Flushing
- Donor Housing (with or without calf)
- Satellite Locations available in IN, IL, OH and MI
- Embryo Transfer
- Bull Sheep Goat & Dog Collections
- Sexed Collections (Bulls by appointment only)
- On Farm Collections



815-844-3733

[interglobesireservice.com](http://interglobesireservice.com)

# CAPTAIN HOOK



**3/4 Maine, 1/4 Simmental**

SIRE: LJSC BLAKESBURG 83F  
(KBSC Simlify 22C x Daddys Money)  
DAM: GECG UNFINISHED 511C  
(ZKCC CHOPPER 844U x TNAT PARKER)  
Dual Registered  
DOB: 04/15/21

Semen  
available  
for pickup



*Jeff Miller  
Show Cattle*  
765.414.4547

*Captain Hook will be on  
Display at Ohio Beef Expo*

# IT PAYS TO HAVE A LOAN WITH US.

As a cooperative, Farm Credit Mid-America offers customer-owners unique benefits. One of the most impactful is our Patronage program, through which we've given farmers back more than \$1.25 billion over the last 8 years. It's one more way we show up for farmers and strengthen rural communities.

To learn more, visit [FCMA.COM/PATRONAGE](https://FCMA.COM/PATRONAGE).

PATRONAGE WEEK IS  
MARCH 18 – 22



\*Patronage is an annual decision made by the Board of Directors to return earnings to eligible customers. For more information about patronage or patronage-eligibility, please visit our website at [fcma.com/patronage](https://fcma.com/patronage). Loans subject to credit approval. Additional terms and conditions may apply. Farm Credit Mid-America is an equal opportunity lender.



NEW WORLD ORDER



ICEMAN



Scan Here  
TO VIEW OUR 2024 SIRE DIRECTORY



COOL KIDS CLUB



KOOL-AID



KUNG FU PANDA

**LAUTNER**  
MATT LAUTNER CATTLE

MATT, MICHELLE, MATILYN, MICHAEL, + MAX LAUTNER  
32061 OLD PORTLAND ROAD ADEL, IOWA 50003  
MATT LAUTNER: 515.450.2800 OFFICE: 515.391.9540  
MLC SHOW BARN & COW HERD MANAGER: NICK DAVIS: 515.384.2411  
[WWW.MATTLAUTNERCATTLE.COM](http://WWW.MATTLAUTNERCATTLE.COM)

# SPONSORS



## CATTLE Visions EXPO COMMITTEE APPAREL



Cattle Visions  
D & J Sales & Service Inc.  
Farm Credit Services



**OFFICIAL UTILITY VEHICLE SPONSOR**  
AgPro



**SHOWMANSHIP SPONSORS**  
Showrite Feeds/Hubbard Botkins  
Olde Wood Limited  
Engelhaupt Embroidery



**JUNIOR SHOW MARKET ANIMAL RING**  
McGuire Farm and Excavating



**JUNIOR SHOW HEIFER RING**  
Goettmoeller Show Cattle



**JUNIOR SHOW SHOWMANSHIP RING**  
Schaeffer Show Cattle



**TOP 5 MARKET ANIMAL SPONSOR**  
David L. Campbell Insurance Agency –  
Hasting Mutual



**TOP 5 HEIFER SPONSOR**  
TransOva Genetics



**SALE RING**  
The Wendt Group



**SPONSOR OF THE DAY – THURSDAY**  
Bane Welker Equipment



**SPONSOR OF THE DAY - FRIDAY**  
Grillin N Chillin



**SPONSOR OF THE DAY – SATURDAY**  
AgCredit



**GENERAL SPONSOR**



Biozyme  
**SPONSOR OF THE DAY - SUNDAY**  
Hilton Columbus Polaris



**YOUTH JUDGING CONTEST SPONSOR**  
Kova



**OFFICIAL EXPO WI-FI SERVICE**  
K Buildings



**OFFICIAL EXPO VET**  
The OSU Veterinary Medical Center



**CONCESSION STAND DRINKWARE**  
RC Packing, Inc.  
Baird



**JUNIOR SHOW BACKTAG SPONSOR**  
Allen County Cattlemen's Association



**CATTLEMEN'S LEARNING CENTER**  
Corteva Agriscience  
ICAP Crop Insurance



**TRADE SHOW BREAKFAST**  
Back Forty Embroidery



**TRADE SHOW HOSPITALITY SANDWICHES**  
Corteva Agriscience



**SOCIAL EVENT BAND SPONSOR**  
Hilton Columbus Polaris



**PRIME GENERAL SPONSOR**  
Heartland Feed Services  
WM E. Fagaly



**JUNIOR SHOW PLATINUM SPONSOR**  
AgCredit  
Fayette County Cattle Feeders  
Heartland Feed Services  
Orchard View Farm





From **BREEDING**  
to **CALVING** to **WEANING**  
& Everything in-between

**pbsanimalhealth**<sup>TM</sup>

is your one-stop shop when it comes to the  
**Success of Your Herd**

**Booths  
151-153**



Serving cattlemen nationwide for 80+ years!  
*Ohio owned and operated since 1941*

**Stop & Shop our Walk-In Retail Store** at the Ohio Beef Expo, March 14-17, 2024

**TAKE ADVANTAGE OF SHOW SPECIALS!**


- **Spend \$495 and get \$50 off**
- **Spend \$250 and get \$20 off**
- **Specials, promotions & GIVE-AWAYS!**
- **DEWORMER DEALS**  
*Plus, NO shipping or hazardous charges!*
- **Lice Control Solutions**
- **Visit with manufacturer representatives**  
from Durvet, ImmuCell and IDEXX

Can't wait  
to see you at  
**OHIO  
BEEF  
EXPO**

**Trade Show Hours**

Thursday, 3/14/24 3pm – 6pm  
Friday, 3/15/24 8:30am – 6pm  
Saturday, 3/16/24 8:30am – 6pm  
Sunday, 3/17/24 8:30am – 2pm

**pbsanimalhealth.com**  
**800-321-0235**

Visit one of our 5 Ohio Retail Stores:   
Circleville | Massillon | St. Henry  
Wilmington | Wooster

OBE24

**CONTACT TOP SIRES**  
**at 630-365-6859**  
TO PLACE YOUR ORDER FOR  
SPRING BREEDING SEASON

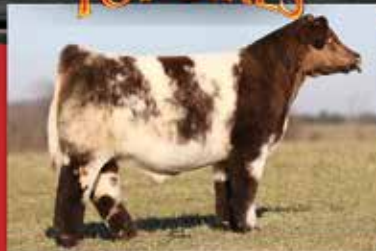


**TOPSIRES.COM**  
**MIKE WEIDNER, 630.365.6859**  
46W604 LEES RD • MAPLE PARK, IL 60151  
Email: topsires@aol.com



**24 KARAT**

**ANGUS**



**FSF PERFECTION**

**SHORTHORN**



**SHOWTIME NO LIMIT**

**HEREFORD**



**DATA BANK**

**MAINE-ANJOU**



**CHANGE IS COMING**

**SIMMENTAL**



**IN GOD WE TRUST**

**3-WAY CROSS**

**The Cattlemen's Source** FOR QUALITY+ SEMEN DISTRIBUTION



# SPONSORS

## JUNIOR SHOW PARTICIPATION AWARDS

Grillin N Chillin  
Miami Valley Plastics  
Sullivan Supply  
Weaver Livestock

## COWBOY HAPPY HOUR SPONSORS

Back Forty Embroidery  
City Limits Western LLC  
Kent Nutrition Group  
MH EBY Inc/ EBY Trailers  
Murphy Tractor  
W.M. E. Fagaly & Son Inc.

## YOUTH BEEF QUALITY ASSURANCE SPONSORS

Wood County Beef Producers

## COLISEUM TIE RAIL SPONSOR

Pugh Central Station

## SELECT GENERAL SPONSORS

McBurney's Livestock Equipment  
Reinecker Ag, LLC

## JUNIOR SHOW GOLD SPONSORS

Clark County Cattle Producers  
Griswold Cattle  
PBS Animal Health  
Rodgers Cattle Co  
S & B Custom Innovation / Herd Pro  
Trans Ova Genetics  
Umberger Show Feeds  
Vanhove Cattle  
Williams County Beef Producers  
Winegardner / Klingaman Show Cattle

## JUNIOR SHOW SILVER SPONSORS

Brutus Show Cattle  
Cedar Lane Farm  
DA Cattle  
Drake Farms  
Fulton County Cattle Feeders  
HFS Agus - Tim & Elizabeth Harsh

Herman Cattle Co  
Hord Livestock  
Jeremiah Jacobs  
Lorain County Farm Bureau Inc.  
Maplecrest Farms LLC  
Miller Family Show Cattle  
Nofziger Seed, Wauseon, Ohio  
Reinecker Ag, LLC  
Rodgers Cattle Co  
Ron Kries, Auctioneer  
Schaeffer Show Cattle  
Turner Shorthorns - Tom & Susie Turner

## JUNIOR SHOW BRONZE SPONSORS

Adelman Trucking Co  
CJ Brown Studios  
Fred Frey  
Highland Livestock Supply Ltd  
Logan County Cattle Association

## JUNIOR SHOW BREED SPONSOR

Angus	Ohio Angus Association
Chianina	Fennig Show Cattle
Hereford	Buckeye Hereford Association
Charolais	Boyert Show Cattle
Maine-Anjou	DeFrank Show Cattle
Simmental	Woodard Cattle Co./West Livestock
Shorthorn	Kaffenbarger Farms Inc
AOB	Leon Show Cattle
Low % Chianina	Winegardner/ Klingaman Show Cattle
ChiAngus	Winegardner / Klingaman Show Cattle
Limousin/Limousin - Flex	Boyert Show Cattle
Maine - Angus	DeFrank Show Cattle
Crossbred Steer - Division I	Blue Rock Shorthorns
Crossbred Steer - Division II	Blue Rock Shorthorns
Crossbred Steer - Division III	Lehman Farms
Crossbred Steer - Division IV	Lehman Farms
Market Heifer	Lehman Farms
Crossbred Overall	Bailey Cattle Co.

# THANK YOU 2024 OHIO BEEF EXPO SPONSORS

# THANK YOU VOLUNTEERS

## JUNIOR SHOW COMMITTEE

Lindsey Hall - Co-Chairman  
Linde Sutherly - Co-Chairman  
Andrew Armstrong  
Sara Beanblossom  
Doug Blay  
Hannah Carter  
Kim Davis  
Brenna Finnegan  
Amy Johnson  
Riley Laber  
Lori Lawrence  
Patsy Miller  
Amber Shoemaker  
Gary Staley  
Jacob Wuebker

## BREED SHOWS, DISPLAYS, & SALES COMMITTEE

Jeff Winkle - Chairman - Shorthorn  
Roger Hunker - Aberdeen Angus  
Jacy Bapst- Angus  
David White - Charolais  
Kim Allen - Gelbvieh  
Lisa Keets - Hereford  
Kyle Baker - Limousin  
Terry Muir - Maine-Anjou  
Dan Wiley - Mini Hereford  
Sherie Clark - Murray Grey  
Ryan LePage - Red Angus  
Pam Haley - Simmental

## EXPO PLANNING COMMITTEE

Shane Riley - Chairman  
Joe Foster - Vice Chairman  
Lindsey Hall - Co-Chairman, Junior Show  
Linde Sutherly - Co-Chairman, Junior Show  
Jeff Winkle - Chairman, Breed Shows & Sales  
Dave Puthoff - Chairman Trade Show  
Mackenzie Dore - Judging Contest  
Matthew Chaney- Judging Contest  
Seth Ebert - Judging Contest

## TRADE SHOW COMMITTEE

Dave Puthoff - Heartland Feed Services, Chairman  
Joe Foster - Quality Liquid Feeds, Vice-Chairman  
Patrick Barker - Kent Feeds  
Emily Warnimont - TransOva  
Allison Hively - Highland Enterprises  
Jenna Watson - AgPro



*Capturing*

YOUR SPECIAL MOMENTS  
AT SHOWS IS OUR BUSINESS

[LINDE.SHOOTPROOF.COM](http://LINDE.SHOOTPROOF.COM)





# JUNIOR SHOW

**ALL JR. SHOW CATTLE MUST HAVE A NEGATIVE BVD TEST TO EXHIBIT.**

## JUNIOR SHOW SCHEDULE

The 2024 Ohio Beef Expo will host the Ohio Cattlemen's Association BEST Junior Show March 14 - 17, 2024 with Showmanship being held Friday, the Market Animal Show Saturday and the Heifer Show on Sunday.

## SHOW LOCATION

Again in 2024, The Ohio Beef Expo Junior Show will take place in the Taft Coliseum. All check-ins will take place in the Gilligan Complex.

## ONLINE SHOW ENTRIES & CHECK-IN

All cattle must be entered online. Participants must register into the system at [best.ohiocattle.org](http://best.ohiocattle.org) and enter their cattle information. The online show entry window will open Monday, March 4. Registered animals must be in the junior exhibitor's name; exhibitors must show their own animal.

Upon arrival at the show all cattle must check-in, in the Junior Show Office first before stalling.

Check-in Times:

- Thursday, March 14 - 4:00 - 8:00 p.m.
- Friday, March 15 - 8:00 a.m. - 11:00 a.m.
- Friday, March 15 - 5:00 p.m. - 6:00 p.m.
- Saturday, March 16 - 10:00-11:00 a.m. (Breeding Animals ONLY)
- Saturday, March 16 - 6:00 p.m. deadline (Expo Sale Heifers only)

Showmanship sign-up is completed through the online show entry and must be completed by Tuesday, March 12 in order to participate in showmanship.

## STALLING PROCESS

No cattle or equipment are permitted on the Ohio Expo Center grounds prior to 7:30 a.m. on Wednesday, March 13.

**Ohio Beef Expo is offering the following stalling options:**

- Prepay for premium stalls on the online auction on Show Circuit on February 21, 2024
- Pre-assigned stalls via the online stalling link for what is available after the online auction in the Gilligan building **(FREE OPTION)**
- Stall when you get to the fairgrounds in the Gilligan building **(FREE OPTION)**

**\*ALL HORSE BARN STALLING WILL BE INSPECTED PRIOR TO THE RELEASE OF CATTLE ON THE GROUNDS - MORE DETAILS TO FOLLOW\***

All pre-stalling for Junior Show cattle will take place online March 6-8, like state fair stalling has been handled in previous years. Stalling will open the 6 and close March 8. If an exhibitor did not purchase stalls in the online auction, this form will be used to stall cattle ahead of time **(FREE OF CHARGE)**.

Exhibitors will use a map of the barns and remaining viaduct bays, if available, to submit their top three preferences. Stalls will be assigned based on these submissions. Links to the online stalling will be available in early March at **WWW.OHIOBEEFEXPO.COM AND OHIO CATTLEMEN'S ASSOCIATION FACEBOOK PAGE AND BEST PROGRAM FACEBOOK PAGE.**

Exhibitors may reserve stalls for other exhibitors if they have all their entry information, the other exhibitor is a paid, current member of OCA and has entered and paid for their show entries.

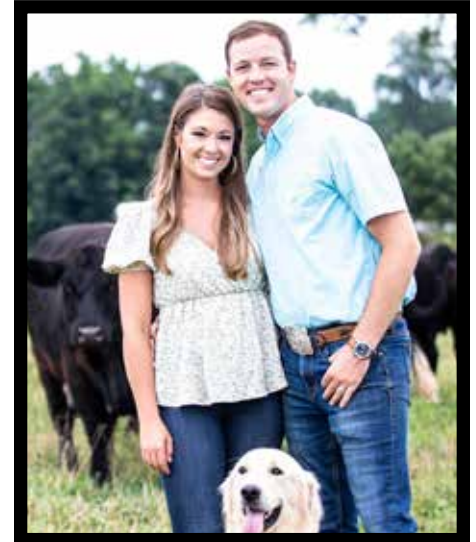
# WELCOME 2024 JUDGES



**ANDREW FOSTER**  
Niles, MI  
**HEIFERS**



**JIRL BUCK**  
Madill, OK  
**MARKET ANIMALS**



**JOSH & MARISSA STREITMATTER**  
Boswell, IN  
**SHOWMANSHIP**



They insure our barns...let Kim Davis Insurance insure YOURS!

(330) 866-3344  
[www.kimdavisagency.com](http://www.kimdavisagency.com)

Stop & visit us at the top of the stairs!

[WWW.CITYLIMITSWESTERN.COM](http://WWW.CITYLIMITSWESTERN.COM)

FOLLOW US ON



# JUNIOR SHOW

All cattle must remain in the barn or at designated tie-outs at all times and may not leave the grounds before or after check-in. Any violations of this rule will result in dismissal from the show.

There will only be one stall per animal available in the Gilligan building. Exhibitors in violation of the rule will be asked to move per the junior show committee's discretion.

No access to the barn for stalling will be permitted prior to Wednesday, March 13 at 7:30 a.m. Cattle will be stalled online by show management prior to arrival at which time all entry fees and OCA memberships must be paid. Any exhibitor stalling without the permission of show management may be asked to move. Exhibitors stalling after operating hours of the show office must call the number posted on the door and check-in at the show office by 8:00 a.m. the following day. All market animals must be entered online and arrive no later than 6:00 p.m. on Friday, March 15 to be checked-in and all heifers must be entered online and arrive by no later than 11:00 a.m. on Saturday, March 16 to be checked-in. Please arrive at the fairgrounds with cattle at least one hour prior to the closure of check-in to ensure completion of stalling and check-in. Upon arrival at the show all exhibitors must check-in first, before stalling.

## ADDITIONAL INFO

NO TENTS are allowed in the Gilligan Building.

## COMMUNITY SERVICE

The OCA BEST Program has teamed up with Ronald McDonald House Charities of Central Ohio (RMHC) for the 2023-24 BEST community service project. You can get involved by donating RMHC Wishlist items at the Ohio Beef Expo. Drop your items off at the OCA membership booth in the trade show!



Ronald McDonald  
House Charities®  
Central Ohio

### TOP 10 LIST OF ITEMS NEEDED

1. Post card Forever stamps
2. Disinfectant sprays (such as Lysol and disinfectant wipes)
3. Disposable paper plates and cutlery
4. Toiletry kits
5. Paper towels
6. Gas station gift cards
7. National retailer (such as Target & Costco) gift cards
8. Full and half-size foil pans
9. Cereal and oatmeal
10. 8 ½ x 11 standard white printer/copier paper

### ADDITIONAL ITEMS NEEDED:

- Individual hand soap
- White Laundry Baskets
- Toilet bowl cleaner
- Batteris (AA & AAA)
- Phillips LED flood light bulbs (17 watt, size: par 38)
- Gift cards to Petco, Mutts & Co., or Pet Supplies Plus
- Snack packs



*Good Luck* **TO THE OHIO BEEF EXPO**  
**JUNIOR EXHIBITORS!**



**SELLING CHAMPION GENETICS FALL 2024**



**TODD, ANNA, ELIZABETH, LINDSEY & MAVERICK PUGH**  
**LINDSEY - 330-933-4297 • TODD - 330-353-1001 • ASSET MANAGER - AMBER SHOEMAKER - 330-933-6156**  
**6005 MEESE ROAD • LOUISVILLE, OHIO 44641**

# LOCALLY ROOTED

WE LEND AND LIVE IN THE SAME COMMUNITIES AS YOU



## Financing Available For:

- Farm Operating
- Farm Real Estate
- Farm Equipment
- Livestock Facilities
- Lot Loans
- Home Construction
- Home Purchases
- Home Improvement



Findlay | Norwalk | Wellington | Fremont | Tiffin | Bowling Green | Marion  
Bucyrus | Kenton | Mt. Gilead | Upper Sandusky | Ottawa | Van Wert | Paulding | Napoleon

800.837.3678 | [AgCredit.net](http://AgCredit.net) |

NMLS# 460334

# STANDOUT SIRES

CREATE THE FUTURE NOW

*select these sires for replacement females*



*Rise Above*

7AN768 Stellpflug Hoffman **RISEABOVE**  
STAGECOACH ♂ Jet Black REG: 20516965



He offers a rare balance of phenotype, genotype and royal pedigree that make him a triple threat sire.



*Blue Chip*

7AR94 Bieber **BLUE CHIP**  
STOCKMARKET ♂ Iron Ore REG: 4303789



BLUE CHIP offers breed-leading calving ease without sacrificing growth and performance.



*Standout*

7SM122 Schooley **STANDOUT**  
Epic ♂ Cowboy Cut REG: 3585120



A complete bull known as the go-to calving ease sire with offspring that are moderate in build and attractive.



*Cuda*

7HP120 BEHM 100W **CUDA** 504C  
Trust ♂ Bennett REG: 43636764



His genetic offering answers the call as a proven source of calving ease with performance.

**SHOW SEMEN SPECIAL BUY 30 UNITS FROM OUR  
LINE-UP & RECEIVE A FREE PACK OF ESTROTECT™**

*Order must be placed at Ohio Beef Expo or delivered during the show. Min. purchase price of \$15/unit.*

**CONTACT YOUR LOCAL SSMC  
REP TO ORDER TODAY!**

SELECT SIRES  
**MEMBER**  
COOPERATIVE



Local Beef Specialists

Kevin Hinds, OH - 614-205-7173

Jim Ray, OH - 614-205-7176

(614) 878-5333 • [www.selectsiresbeef.com](http://www.selectsiresbeef.com)